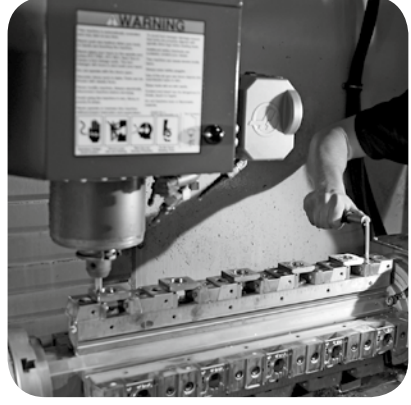


**We  
Produce  
Exactly  
What  
You Need**



www.standa.it

e-mail: sales@standa.it

Phone: +370-5-2651483

Fax: +370-5-2651474

**standa**

## Honeycomb Table Tops

**1HT**



- Sandwich structure with steel honeycomb core
- 5 mm ferromagnetic stainless steel top skin with a pattern of M6 holes spaced by 25 mm
- Surface flatness  $\pm 0.1$  mm over any 1m<sup>2</sup> area
- Laser Port (optional – see the next page)

**Honeycomb Table Tops 1HT** provide the base on which precision optical and laser work is performed. The table tops have a **honeycomb core** inside.

The table tops meet high requirements for rigidity, flatness, vibration isolation and damping. We work constantly to improve the design, weight and cost-effectiveness of the table tops.

Standard Honeycomb Tabletop **1HT** consists of a **5 mm** thick cold-rolled stainless ferromagnetic steel top skin, and **3-5 mm** thick bottom skin, both bound under high

pressure to a **honeycomb core**, using a special epoxy resin. **Thickness** of the skins depends on the dimensions of the table top.

The top skin has a pattern (grid) of **M6** holes spaced by **25 mm** with  $\pm 0.1$  mm accuracy. It allows to make very quick experimental setups, and, at the same time, ensures a high level of precision and reproducibility. The surface of the **top skin** is ground to **flatness** of  $\pm 0.1$  mm over any 1 m<sup>2</sup> area over the entire surface. The **bottom skin** is coated in a firm decorative coating.

Our standard **honeycomb core** is made of **0.25 mm** corrosion-resistant plated sheet steel. A special composition of epoxy resin guarantees adhesion, rigidity, stability and damping corresponding to highest requirements.

The side-walls of the table top are made of a special acoustically hollow plastic which damps acoustic vibrations. The side-walls are covered in a decorative black leather substitute.

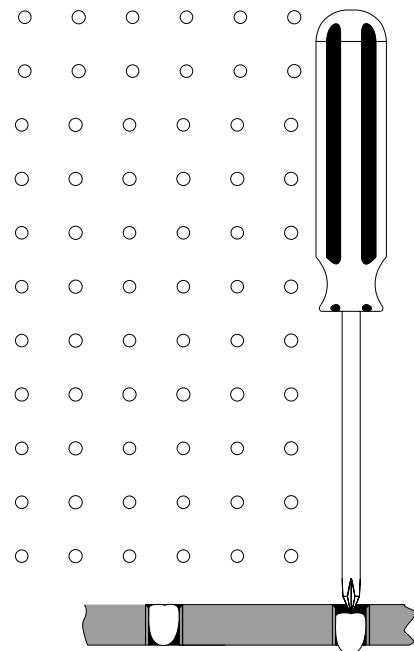
Upon request a **Laser Port** can be embedded in the table top allowing a laser beam to be let through the table (see the next page).

The Honeycomb Table Tops **1HT** have been mechanically and acoustically tested by qualified specialists.



### The Concept of Closed Top Honeycomb Tables

Real Closed Top – no way for liquids or tiny particles to get in. Only the holes you do use are open. Make “new” holes by yourself, by pushing in the plug with the help of a screwdriver, a hex key or another thin hard tool. If you need to re-seal the no longer used holes, let us know and we will provide polyethylene plugs that fit snugly into the M6 holes. To clean the Standa “closed” tabletop, simply wipe the surface using a damp cloth (with cleaning agent if necessary). No need to clean each individual hole!



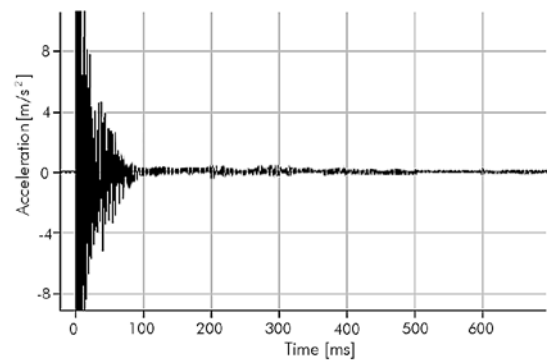
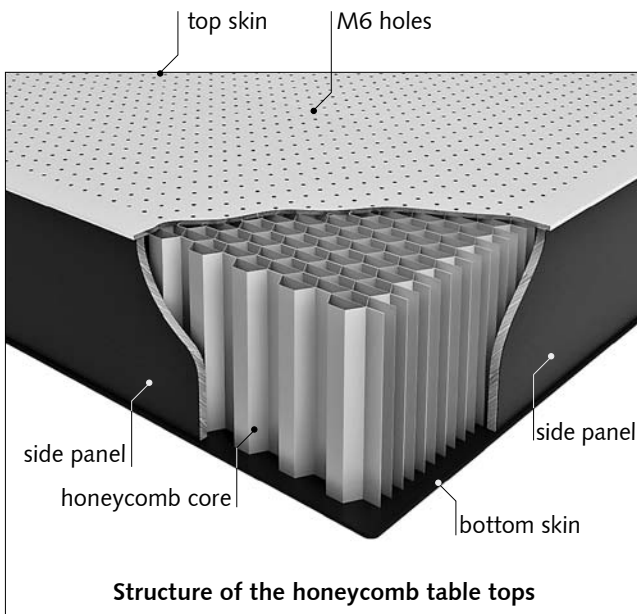


# Honeycomb Table Tops

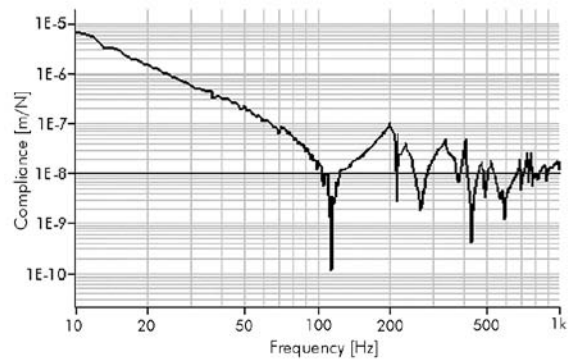
1HT



- top skin 5 mm thick ferromagnetic stainless steel
- honeycomb core of 0.25 mm thick steel has a density of 125 – 250 kg/m<sup>3</sup> depending on the cell size and its structure
- top skin has a pattern of M6 holes spaced by 25 mm
- flatness ±0.1 mm/m<sup>2</sup>
- Young's modulus  $21 \times 10^5$  kg/cm<sup>2</sup>
- shear modulus  $8.2 \times 10^5$  kg/cm<sup>2</sup>
- deflection under load 1.5 μm/m
- resonant frequency approx. 200 Hz
- transient excitation delay time 50 ms



Acceleration curve for 1HT12-24-20 Table Top



Compliance curve for 1HT12-24-20 Table Top

*Our company produces table tops according to customer's specifications.*

**Non-Ferromagnetic Table Tops are available for special orders**

Example for ordering:  
1HT10-20-20-NM – non-ferromagnetic table top.

**Laser Ports** are designed to lead a laser beam or cables through a Table Top. The standard location of a port is chosen for use with the **Laser Shelves 1LS52**.

To specify a Laser Port in your order please append letter "H" to the code for a Honeycomb Table Top e.g. 1HT10-20-20H.



www.standa.it

e-mail: sales@standa.it



Phone: +370-5-2651483

Fax: +370-5-2651474



**standa**



Optical Tables 1

Brackets & Rails 2

Base Mounts & Accessories 3

Optical Mounts 4

Optical Positioners 5

Base Positioners 6

Translation & Stages 7

Motorised Positioners & Controllers 8

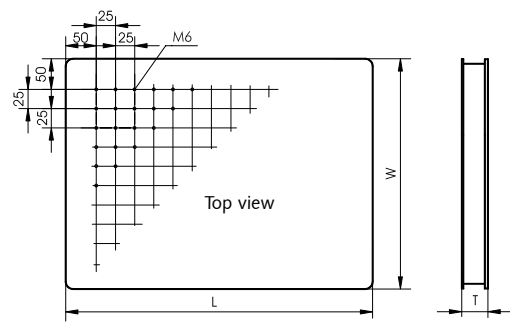
Fine Adjustment Screws 9

Opto-Mechanics & Sets 10

Light Test & Measurement Instruments 11

Lasers & Accessories 12

Size, mm	Thickness, mm		
	200	300	400
600×2400	1HT06-24-20		
800×1000	1HT08-10-20		
800×1200	1HT08-12-20		
800×1500	1HT08-15-20		
800×1800	1HT08-18-20		
800×2000	1HT08-20-20		
800×2400	1HT08-24-20		
900×1000	1HT09-10-20		
900×1200	1HT09-12-20		
900×1400	1HT09-14-20		
900×1500	1HT09-15-20		
900×1600	1HT09-16-20		
900×1800	1HT09-18-20	1HT09-18-30	
900×2400	1HT09-24-20	1HT09-24-30	
1000×1000	1HT10-10-20		
1000×1200	1HT10-12-20		
1000×1500	1HT10-15-20	1HT10-15-30	
1000×1800	1HT10-18-20	1HT10-18-30	
1000×2000	1HT10-20-20	1HT10-20-30	
1000×2400	1HT10-24-20	1HT10-24-30	
1000×3000	1HT10-30-20	1HT10-30-30	
1000×3500	1HT10-35-20	1HT10-35-30	
1200×1200	1HT12-12-20	1HT12-12-30	
1200×1500	1HT12-15-20	1HT12-15-30	
1200×1800	1HT12-18-20	1HT12-18-30	
1200×2400	1HT12-24-20	1HT12-24-30	1HT12-24-40
1200×3000	1HT12-30-20	1HT12-30-30	1HT12-30-40
1200×3500	1HT12-35-20	1HT12-35-30	1HT12-35-40
1200×4000	1HT12-40-20	1HT12-40-30	1HT12-40-40
1500×1500	1HT15-15-20	1HT15-15-30	1HT15-15-40
1500×1800	1HT15-18-20	1HT15-18-30	1HT15-18-40
1500×2000	1HT15-20-20	1HT15-20-30	1HT15-20-40
1500×2400	1HT15-24-20	1HT15-24-30	1HT15-24-40
1500×2500	1HT15-25-20	1HT15-25-30	1HT15-25-40
1500×3000	1HT15-30-20	1HT15-30-30	1HT15-30-40
1500×3500	1HT15-35-20	1HT15-35-30	1HT15-35-40
1500×4000	1HT15-40-20	1HT15-40-30	

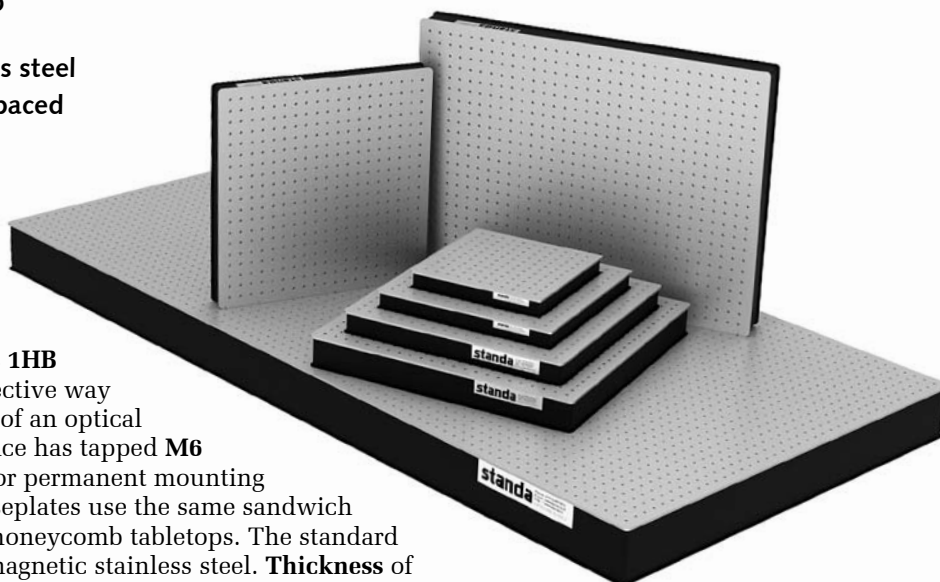


Custom sizes available on request

## Honeycomb Breadboards

### 1HB

- Core – 265 kg/m<sup>3</sup> 0.25 mm thick steel honeycomb
- Top skin – 5 mm thick ferromagnetic stainless steel
- Pattern of M6 holes spaced by 25 mm
- Flatness ±0.1 mm/m<sup>2</sup>

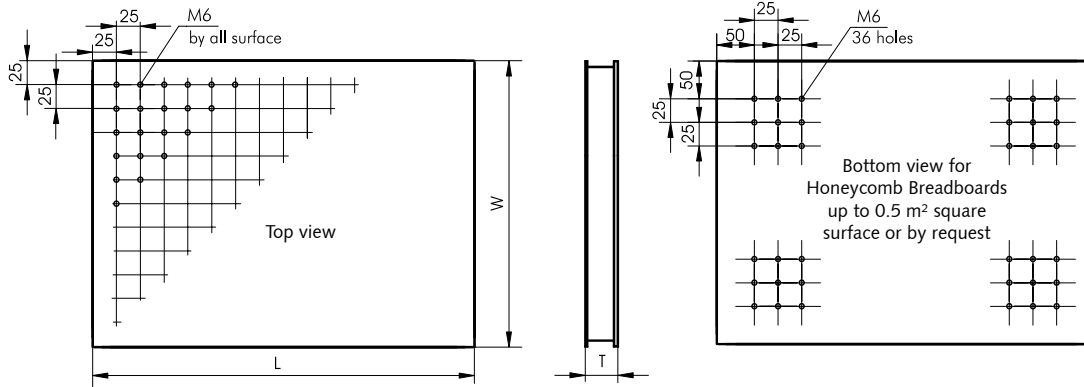


### Honeycomb Breadboards 1HB

provide a particularly effective way to expand the useful area of an optical table. The mounting surface has tapped M6 holes on 25 mm centers for permanent mounting of components. These baseplates use the same sandwich structure as our full size honeycomb tabletops. The standard top skin is made of ferromagnetic stainless steel. **Thickness** of the skin is 5 mm.

# Honeycomb Breadboards

1HB



A breadboard may be mounted on a table by silent rods **2SR-32** or **3MP25**

Honeycomb Breadboards up to 0,5m<sup>2</sup> have a grid of nine **M6** tapped mounting holes in each corner of the bottom side. Larger Breadboards can have this grid by request. The **1HB** can be mounted at the bottom side of a table or elevated above its surface using the Silent Rods **2SR**.

These **Breadboards are not intended as a substitute for optical tables**. Their size-to-thickness ratio produces relatively low end-to-end rigidity, although their local rigidity over distances of less than about **30 to 60 cm** is excellent. When attached solidly to a dynamically rigid optical table, performance of resulting working surface becomes comparable to that of the table itself.

## Honeycomb Breadboards 1HB Ordering Chart

Size WxL, mm	Thickness T, mm			
	40	50	70	120
300×300	1HB03-03-04			
300×600	1HB03-06-04	1HB03-06-05		
300×900	1HB03-09-04	1HB03-09-05		
300×1200	1HB03-12-04	1HB03-12-05		
300×1800	1HB03-18-04	1HB03-18-05		
440×440	1HB044-044-04			
500×500	1HB05-05-04	1HB05-05-05	1HB05-05-07	
500×750	1HB05-075-04	1HB05-075-05	1HB05-075-07	
500×1000	1HB05-10-04	1HB05-10-05	1HB05-10-07	
600×600	1HB06-06-04	1HB06-06-05	1HB06-06-07	
600×800	1HB06-08-04	1HB06-08-05	1HB06-08-07	
600×900	1HB06-09-04	1HB06-09-05	1HB06-09-07	1HB06-09-12
600×1200	1HB06-12-04	1HB06-12-05	1HB06-12-07	1HB06-12-12
600×1500			1HB06-15-07	1HB06-15-12
600×1800			1HB06-18-07	1HB06-18-12
600×2400			1HB06-24-07	1HB06-24-12
800×800	1HB08-08-04	1HB08-08-05	1HB08-08-07	1HB08-08-12
800×1000		1HB08-10-05	1HB08-10-07	1HB08-10-12
800×1200		1HB08-12-05	1HB08-12-07	1HB08-12-12
800×1500			1HB08-15-07	1HB08-15-12
800×1800			1HB08-18-07	1HB08-18-12
900×1000		1HB09-10-05	1HB09-10-07	1HB09-10-12
900×1200		1HB09-12-05	1HB09-12-07	1HB09-12-12
900×1400			1HB09-14-07	1HB09-14-12
900×1500		1HB09-15-05	1HB09-15-07	1HB09-15-12
900×1600			1HB09-16-07	1HB09-16-12
900×1800			1HB09-18-07	1HB09-18-12
900×2400			1HB09-24-07	1HB09-24-12
1000×1000		1HB10-10-05	1HB10-10-07	1HB10-10-12
1000×1200			1HB10-12-07	1HB10-12-12
1000×1500			1HB10-15-07	1HB10-15-12
1000×1800			1HB10-18-07	1HB10-18-12
1000×2000				1HB10-20-12
1000×2400				1HB10-24-12
1200×1200			1HB12-12-07	1HB12-12-12
1200×1500				1HB12-15-12
1200×1800				1HB12-18-12
1500×1500			1HB15-15-07	1HB15-15-12
1500×1800				1HB15-18-12
1500×2000				1HB15-20-12

Custom sizes available on request

www.standa.it  
e-mail: sales@standa.it

Phone: +370-5-2651474 Fax: +370-5-2651483

**standa**

- Optical Tables 1
- Brackets & Rails 2
- Base Mounts & Accessories 3
- Optical Mounts 4
- Optical Positioners 5
- Base Positioners 6
- Translation & Rotation Stages 7
- Motorised Positioners & Controllers 8
- Fine Adjustment Screws 9
- Opto-Mechanics & Sets 10
- Light Test & Measurement Instruments 11
- Lasers & Accessories 12

# Aluminium Honeycomb Breadboards

**1HB-AL**



**new**

- Aluminum Honeycomb Breadboards with Black Anodized Top Surface
- Metric or imperial holes pattern
- Non-magnetic
- 50 mm overall thickness
- Low-weight honeycomb breadboard solution

Standa technologies allowed to introduce all **aluminum honeycomb** optical breadboards with **black top surface** anodizing which significantly decreases backscatter for any optical setup mounted on such breadboard. Together with sufficient **stiffness** and **flatness** those breadboards have **>10% lower weight** than solid aluminum breadboards of 1BL series and are almost **3 times lighter** than stainless steel honeycomb optical breadboards series - 1HB.

**1HB-AL** breadboards are ideal for optical setups and are good for portable systems also are great for applications in the environment where non-magnetic instrumentation is a necessity.



## SPECIFICATIONS

**Flatness**  $\pm 0.15$  mm ( $\pm 0.006$ ") over 0.3 m<sup>2</sup>

### Top skin

Thickness 6 mm  
Material black anodized aluminium

### Mounting Holes

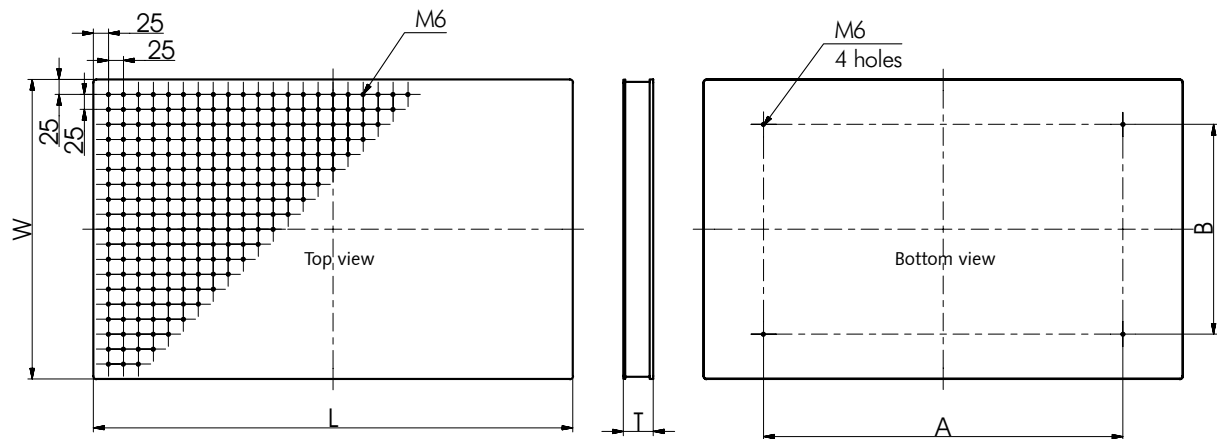
Metric M6 tapped holes on 25 mm centers  
Imperial 1/4"-20 tapped holes on 1" centers (more info on [www.standa.it](http://www.standa.it))

### Honeycomb Core

Material 0.5 mm thick aluminium

### Custom Breadboard Capabilities

Max. Width (W) 900 mm  
Max. Length (L) 1800 mm  
Max. Thickness 120 mm



Model	W, mm	L, mm	T, mm	B, mm	A, mm	Anodized
1HB-AL-02-04-05-BL	200	400	50	150	300	black
1HB-AL-05-05-05-BL	500	500	50	350	350	black
1HB-AL-05-08-05-BL	500	800	50	350	600	black

Custom sizes available on request on [www.standa.it](http://www.standa.it)

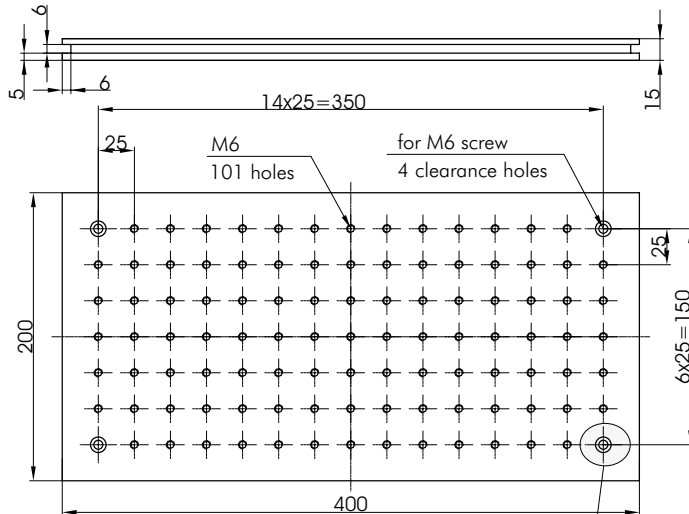
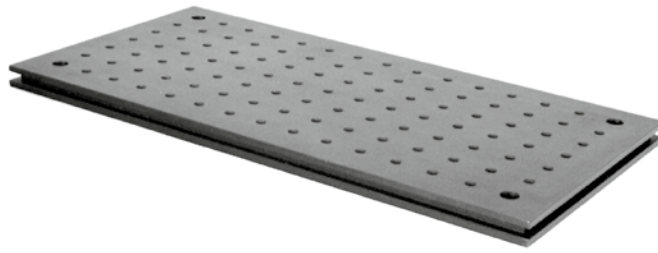
Available **INCH** version **1HB-AL-INCH**  
more info on [WWW.STANDA.LT](http://WWW.STANDA.LT)



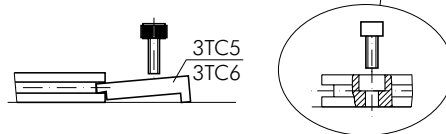
# Solid Steel Breadboard Aluminium Breadboard

**1BS-2040-015****1BAL-2040-015**

- Two types of material
- Length 400 mm
- Width 200 mm
- Thickness 15 mm
- M6 tapped holes pattern on 25 mm centres



ways to fasten a  
Breadboard



## SPECIFICATIONS

### Flatness

1BS-2040-015	±0.03 mm
1BAL-2040-015	±0.15 mm

### Pattern

M6 holes spaced by 25 mm

### Dimensions

Length	400 mm
Width	200 mm
Thickness	15 mm

### Material

1BS-2040-015	black finished ferromagnetic steel
1BAL-2040-015	black anodized aluminium

### Weight

1BS-2040-015	8.9 kg
1BAL-2040-015	3 kg

## ORDERING INFORMATION

- 1BS-2040-015** – black finished ferromagnetic steel plate  
**1BAL-2040-015** – black anodized aluminium plate

**Breadboard 1BS-2040-015** (former part number **1B82**) is an alternative to the honeycomb table tops. It is particularly useful in small optical setups.

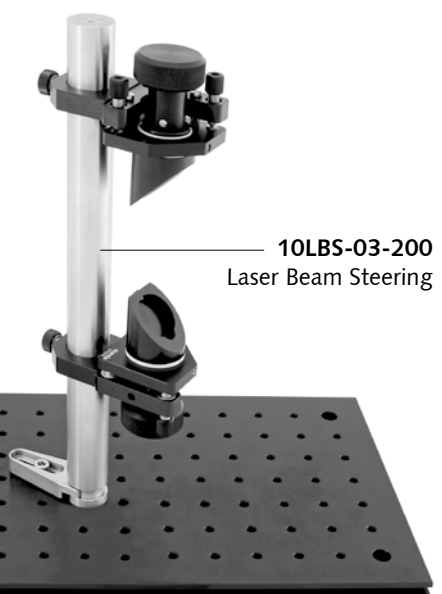
**1BS-2040-015** is a **black finished ferromagnetic steel plate**, of one size.

**1BAL-2040-015** is a **black anodized aluminium plate**, of one size.

The breadboard has **grooves** on all 4 sides, so you can quickly mount it using Table Clamps **3TC5**, **3TC6**. On the corners there are **4 holes for M6 screw** used to mount directly to tables or to fix at a certain height on Silent Rods **2SR32**.



**1BS-2040-015** mounted  
on Silent Rods **2SR32**



**1BS-2040-015**  
Solid Steel Breadboard



www.standa.it

e-mail: sales@standa.it



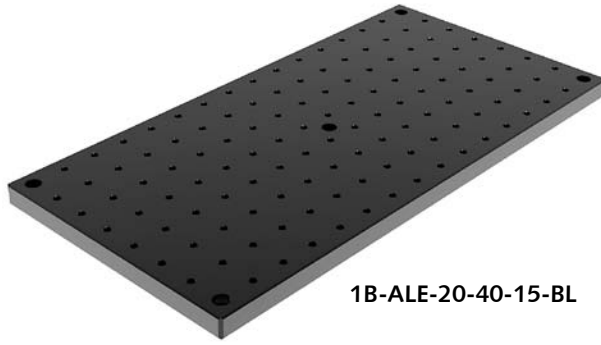
Phone: +370-5-2651483

Fax: +370-5-2651474




# Aluminium Breadboards

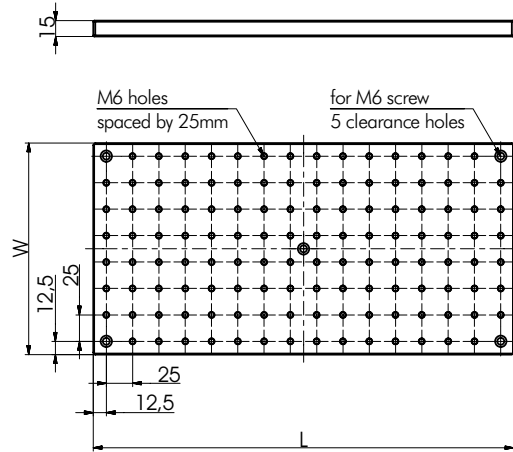
**1B-ALE**



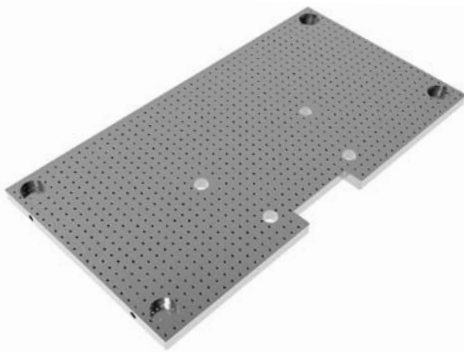
1B-ALE-20-40-15-BL

- Thickness 15 mm
- M6 tapped holes pattern on 25 mm centres
- Clear and black anodized
- Non-anodized breadboards ready for vacuum available on request

**1TS-140B-ALE** Active Vibration Isolation System with Aluminium Breadboard



Custom sizes Non-anodized breadboards ready for vacuum available on request



Circular Aluminium Breadboards available on request



ORDERING EXAMPLE

1B-ALE-DXXX-015

The diameter of Circular Aluminium Breadboard in centimeters:

1B-ALE-D200-015

Ø200cm=Ø2000mm

Model	W, mm	L, mm	Thickness, mm	Anodized	Weight, kg
1B-ALE-10-20-015	100	200	15	no	1.05
1B-ALE-10-20-015-BL	100	200	15	black	1.05
1B-ALE-15-15-015	150	150	15	no	0.95
1B-ALE-15-15-015-BL	150	150	15	black	0.95
1B-ALE-20-20-015	200	200	15	no	1.7
1B-ALE-20-20-015-BL	200	200	15	black	1.7
1B-ALE-20-40-015	200	400	15	no	3.4
1B-ALE-20-40-015-BL	200	400	15	black	3.4
1B-ALE-25-25-015	250	250	15	no	2.65
1B-ALE-25-25-015-BL	250	250	15	black	2.65
1B-ALE-30-30-015	300	300	15	no	3.8
1B-ALE-30-30-015-BL	300	300	15	black	3.8
1B-ALE-30-45-015	300	450	15	no	5.7
1B-ALE-30-45-015-BL	300	450	15	black	5.7
1B-ALE-30-60-015	300	600	15	no	7.6
1B-ALE-30-60-015-BL	300	600	15	black	7.6
1B-ALE-40-80-015	400	800	15	no	13.5
1B-ALE-40-80-015-BL	400	800	15	black	13.5
1B-ALE-45-45-015	450	450	15	no	8.5
1B-ALE-45-45-015-BL	450	450	15	black	8.5
1B-ALE-45-60-015	450	600	15	no	11.35
1B-ALE-45-60-015-BL	450	600	15	black	11.35
1B-ALE-45-75-015	450	750	15	no	14.2
1B-ALE-45-75-015-BL	450	750	15	black	14.2
1B-ALE-60-60-015	600	600	15	no	15.2
1B-ALE-60-60-015-BL	600	600	15	black	15.2
1B-ALE-60-80-015	600	800	15	no	20.1
1B-ALE-60-80-015-BL	600	800	15	black	20.1
1B-ALE-75-75-015	750	750	15	no	23.6
1B-ALE-75-75-015-BL	750	750	15	black	23.6
1B-ALE-80-80-015	800	800	15	no	26.9
1B-ALE-80-80-015-BL	800	800	15	black	26.9





# Pneumatic Vibration Isolation System

**1VIS10**



1VIS10

- Vertical resonance frequency: 1.5 Hz (average load)
- Horizontal resonance frequency: 1.7 Hz (average load)
- Air source pressure: up to 600 KPa (6 bar) (87 PSI)

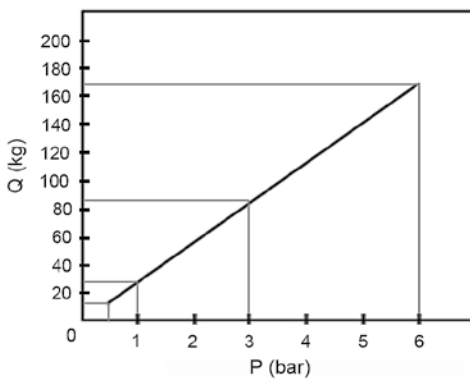
**Pneumatic Vibration Isolation System 1VIS10** is an ideal foundation for equipment which is sensitive to vibration, e.g. microscopes, scales, interferometers, and similar devices.

Work surface of the table is separated from the floor by means of a highly effective system of pneumatic supports.

The system features solid and light supports that come in various dimensions to support a wide range of table top sizes. This enables quick creation of vibration isolation systems for a variety of tasks.

Maximum load capacity of each support leg is 168 kg.

Working pressure of the system is 0.5–6 atm (bar). Required minimum system pressure required to support a certain load in kg is shown in the load/pressure diagram.

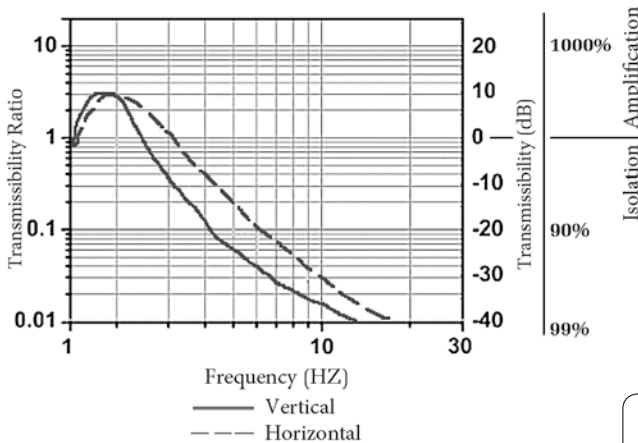


P - required minimal pressure in atm (bar).  
Q - load per support leg (kg).

**Load/Pressure diagram**

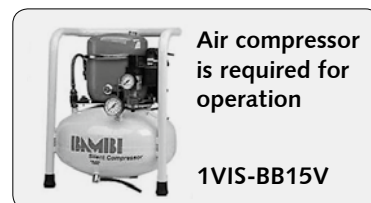
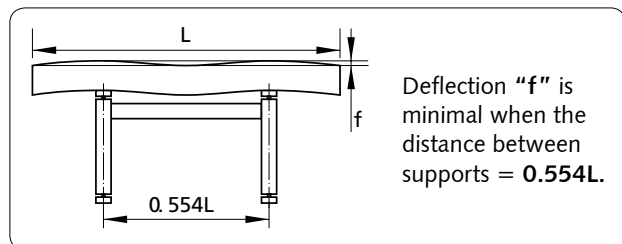
## SPECIFICATIONS

Height of the vibration isolation system	600, 700 mm
Vertical movement range	14 mm
Precision of automatic level control	±0.3 mm
Vertical resonance frequency	1.5 Hz (average load)
Vertical isolation at 5 Hz	85–93%
Vertical isolation at 10 Hz	90–98%
Horizontal resonance frequency	1.7 Hz (average load)
Horizontal isolation at 5 Hz	85–93%
Horizontal isolation at 10 Hz	90–97%
Pressure from source of air	600 KPa (6 bar) (87 PSI)
Air supply socket diameter	Ø 6 mm
Operating humidity (max)	90%
Operating temperature range	10–50 °C
Minimum load capacity	15 kg per isolator
Load-bearing capacity (at 6 bar)	168 kg per isolator



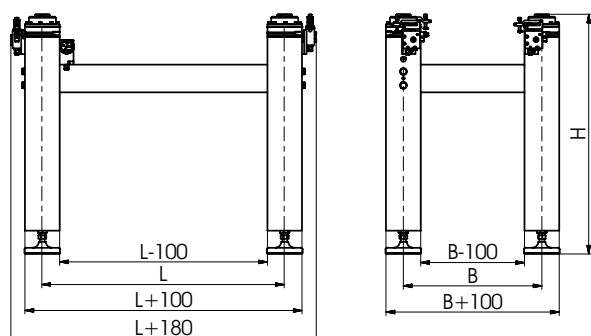
**Vibration / Isolation performance**

Model	B, mm	L, mm	H, mm
1VIS10-05-07-60	500	700	600
1VIS10-05-07-70	500	700	700
1VIS10-05-12-60	500	1200	600
1VIS10-05-12-70	500	1200	700
1VIS10-065-12-60	650	1200	600
1VIS10-065-12-70	650	1200	700
1VIS10-08-12-60	800	1200	600
1VIS10-08-12-70	800	1200	700
1VIS10-065-18-60	650	1800	600
1VIS10-065-18-70	650	1800	700



**Air compressor is required for operation**

**1VIS-BB15V**



www.standa.it

e-mail: sales@standa.it



Fax: +370-5-2651483

Phone: +370-5-2651474



**standa**



- Optical Tables 1
- Brackets & Rails 2
- Base Mounts & Accessories 3
- Optical Mounts 4
- Optical Positioners 5
- Base Positioners 6
- Translation & Rotation Stages 7
- Motorised Positioners & Controllers 8
- Fine Adjustment Screws 9
- Opto-Mechanics & Sets 10
- Light Test & Measurement Instruments 11
- Lasers & Accessories 12

# Pneumatic Vibration Isolation Workstation

**1VIS10W**



1VIS10W-09-17-77-CA

On request we produce workstations with Honeycomb Table Tops of any dimensions.

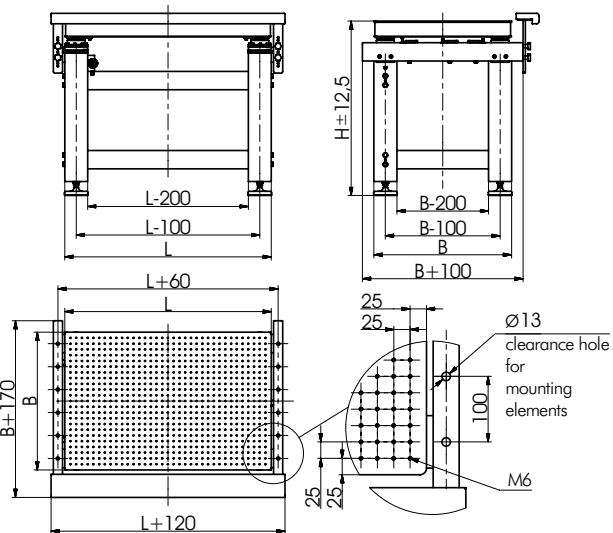
Model	B, mm	L, mm	H, mm
1VIS10W-06-09-77	600	900	770
1VIS10W-075-09-77	750	900	770
1VIS10W-075-12-77	750	1200	770
1VIS10W-09-14-77	900	1400	770



**Pneumatic Vibration Isolation Workstation 1VIS10W** consists of **1VIS10**, a **Honeycomb Breadboard**, and a protection **Armrest**.

As you lean on the **Armrest**, it guards the honeycomb table from impacts of your body. This allows you to work at the table like at a conventional table, using microscope and other equipment.

The suggested **elevation** of table's surface is **770 mm**. We produce four standard models of **1VIS10W**.



**Laser shelves** are optional breadboards. They save space when installing lasers and other equipment beneath honeycomb table tops. The shelf stays mechanically coupled to the table top.



Laser shelves sizes are on page 1-23.

**1VIS10** system can be optionally equipped with **Castors**, which are made of high-quality nylon, high abrasion resistant, smooth running performance on even floors, shock and impact-resistant, corrosion-resistant.



**Armrest** guards isolates the honeycomb table from impacts of your body. This allows you to work at the table like at a conventional table, using a microscope or other equipment. Optionally you may order workstation with two **Armrests** on opposite sides.



## ORDERING EXAMPLE

**1VIS10W-09-14-77-CA**

**1VIS10W** workstation sized **900×1400×770 mm** (B×L×H); CA – casters.

**Low noise air compressors** have been developed for those users where low noise and relatively small flow of air is required. With **sound levels** from **just 40 dB(A)** and almost no vibration when running, the compressors can be located in the work area without causing any noise intrusion. The compressors have a **8 bar** maximum working pressure. Designed to require minimal maintenance and to ensure years of trouble free use, our comprehensive range meets the needs of many applications including; air-brushing, exhibition stands, glue dispensing, pneumatic controls, stapling – anywhere where compressed air is needed silently!

Air compressor is required for operation



1VIS-BB15V

# Pneumatic Vibration Isolation System

## 1VIS22



1VIS22

- Vertical resonance frequency: 1.5 Hz (average load)
- Horizontal resonance frequency: 1.7 Hz (average load)
- Air source pressure: up to 600 KPa (6 bar) (87 PSI)

**Pneumatic Vibration Isolation System 1VIS22** is an ideal foundation for equipment which is sensitive to vibration, e.g. microscopes, scales, interferometers, and similar devices.

Work surface of the table is separated from the floor by means of a highly effective system of pneumatic supports, i.e. pneumatic springs with hydraulic (oil) dampers.

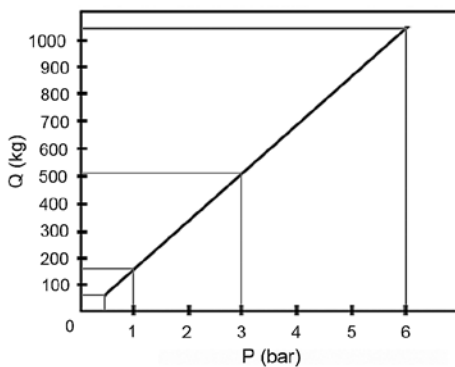
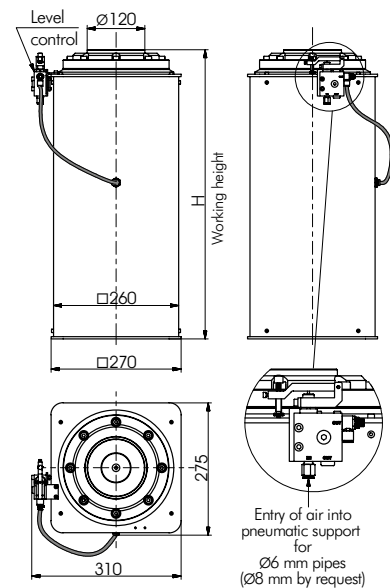
The system features solid and light supports that come in various dimensions to support a wide range of table top sizes. This enables quick creation of vibration isolation systems for a variety of tasks.

Maximum load capacity of each support leg is **1000 kg**.

### SPECIFICATIONS

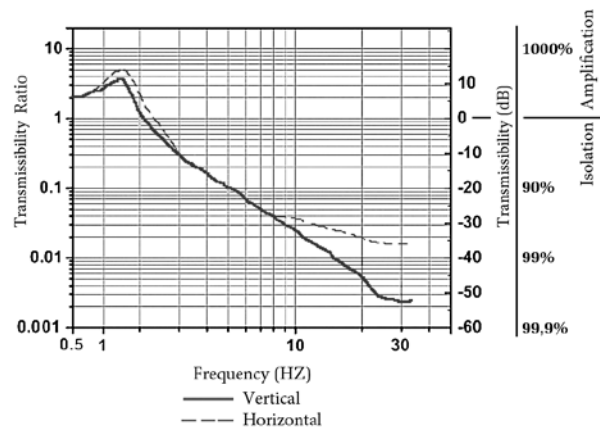
Height of the vibration isolation system	H= 400, 500, 600, 700, 800 mm
Vertical movement range	14mm
Precision of automatic level control	±0.3 mm
Vertical resonance frequency	1.5 Hz (average load)
Vertical isolation at 5 Hz	85–93%
Vertical isolation at 10 Hz	90–98%
Horizontal resonance frequency	1.7 Hz (average load)
Horizontal isolation at 5 Hz	85–93%
Horizontal isolation at 10 Hz	90–97%
Pressure from source of air	600 KPa (6 bar) (87 PSI)
Air supply socket opening	Ø 6 mm
Operating humidity (max)	90%
Operating temperature range	10–50 °C
Minimum load capacity	90 kg per isolator
Load-bearing capacity (at 6 bar)	1,000 kg per isolator

Working pressure of the system is 0.5–6 atm (bar). Required minimum system pressure required to support a certain load in kg is shown in the load/pressure diagram.



P - required minimal pressure in atm (bar).  
Q - load on one support leg (kg).

Load/Pressure diagram



Vibration / Isolation performance

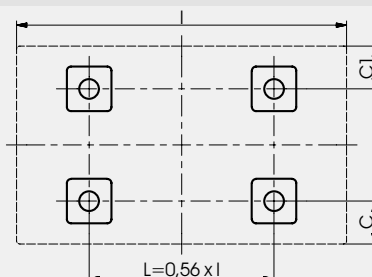
### ORDERING EXAMPLE

#### 1VIS22-70-4

**70** – height of isolator **700 mm**.  
**4** – number of isolators - **4 pc**.

Standard heights of 1VIS22-XX-X

- 400 mm** (code 40),
- 500 mm** (code 50),
- 600 mm** (code 60),
- 700 mm** (code 70),
- 800 mm** (code 80).

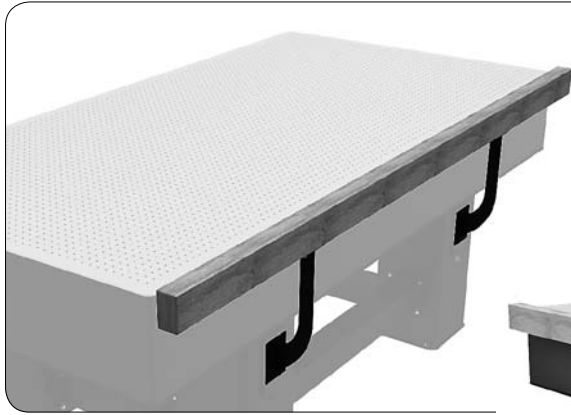


We offer optimal Vibration Isolation Systems for the optical table of your choice.

Figure shows the correct layout of pneumatic supports for tables with standard dimensions.

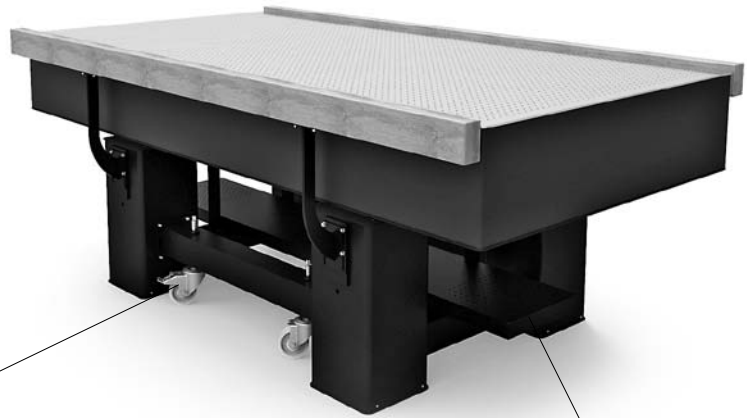
**C=C1=160...200 mm**





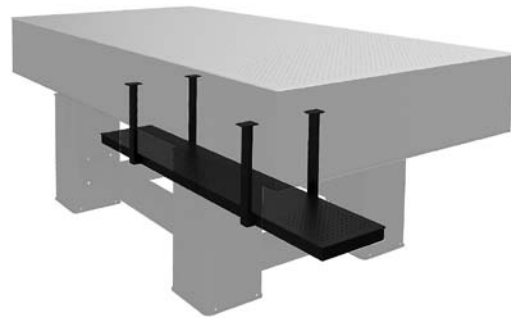
**Armrest guards** isolates the honeycomb table from impacts of your body. This allows you to work at the table like at a conventional table, using a microscope or other equipment.

Optionally you may order workstation with two **Armrests** on opposite sides.



**Castors** - made of high-quality nylon, high abrasion resistant, smooth running performance on even floors, shock and impact-resistant, corrosion-resistant.

**Laser shelves** are optional breadboards. They save space when installing lasers and other equipment beneath honeycomb table tops. The shelf stays mechanically coupled to the table top.



**Laser shelf sizes can be found on page 1-23.**

Below are the formulas for calculating optimal dimensions of **1VIS22** with **casters**.

$$B=0.56 \times b; L=0.56 \times l; H=900 - h$$

**Standard dimensions of 1VIS22 are presented below.** Select the **closest greater** values matching your calculations.

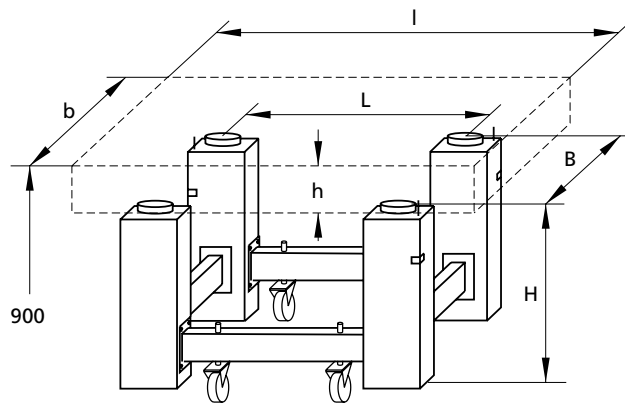
**1VIS22-B-L-H-CA:**

B: **500 mm** (code 05), **650 mm** (code 065), **800 mm** (code 08);

L: **800 mm** (code 08), **1300 mm** (code 13), **1900 mm** (code 19);

H: **400 mm** (code 40), **500 mm** (code 50), **600 mm** (code 60), **700 mm** (code 70), **800 mm** (code 80).

CA: **casters**



**Low noise air compressors** have been developed for those users where low noise and relatively small flow of air is required. With **sound levels from just 40 dB(A)** and almost no vibration when running, the compressors can be located in the work area without causing any noise intrusion. The compressors have a **8 bar** maximum working pressure. Designed to require minimal maintenance and to ensure years of trouble free use, our comprehensive range meets the needs of many applications including; air-brushing, exhibition stands, glue dispensing, pneumatic controls, stapling – anywhere where compressed air is needed silently!



**Air compressor is required for operation**

**1VIS-BB15V**

**Car Pumps and Air Compressors** are available upon request. **Product details** are available on our web page [www.standa.it](http://www.standa.it).

# Optical Table Supports

**1TS**

**1TS05-07-06-AP-500**

**Table supports** may be supplied with various leveling and vibration-isolation systems. This allows to meet various needs of our customers.

**Optical Table Supports 1TS** are primarily designed for the Honeycomb Table Tops **1HT**. Table Supports are produced from steel tubes of **100 mm** square section, in decorative black coating. 1TS is composed of two "II" type supports, bound by a cross-beam.

**Optical Table Supports 1TS** ideally suit other types of optical plates and other equipment, as well. This is possible because plates are not fastened – they are just laid on top of the supports.

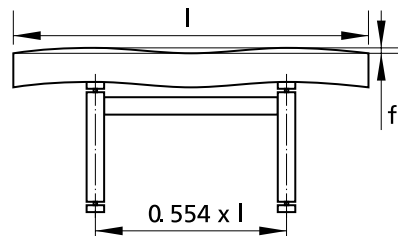
On request we produce table supports of any size, design, and of greater sturdiness.

- Convenient sizes
- Optimal height
- Multipurpose in use
- Handy assembling

Optionally you may order 2 to 3 extra cross-beams and/or casters

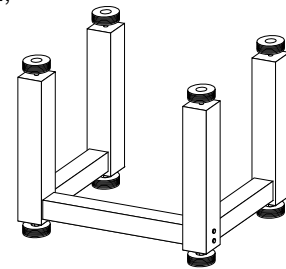

**Optical Table Support 1TS with Honeycomb Table Tops 1HT**

**Standard models of 1TS table supports available for short delivery**

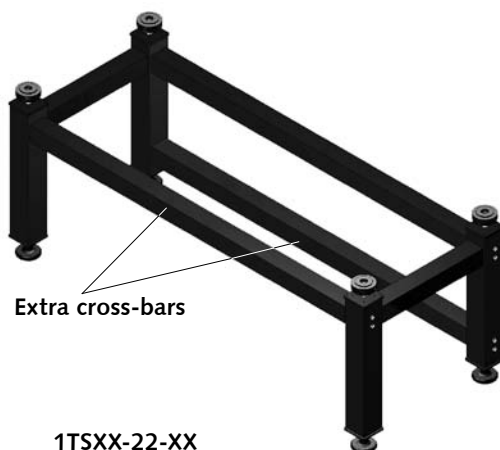


Deflection "f" is minimal when the distance between supports =  $0.554 \times l$ .  
More information for choosing the optimal support size for your optical table on 1-12 page.

If required, e.g. when used with a laser shelf **1LS52**, the table support may be assembled upside-down. This doesn't degrade its performance.



## REINFORCED FRAME FOR LARGE AND HEAVY TABLETOPS!


**Extra cross-bars**
**1TSXX-22-XX**

For heavy tabletops longer than 3500 mm we provide reinforced table support structure by default. Extra cross-bars are added to three sides of the table support frame for increased stability and reliability. Standard length - 2200 mm between support leg centers.



www.standa.it

e-mail: sales@standa.it



Fax: + 370-5-2651483

Phone: + 370-5-2651474


**standa**

 Optical  
Tables

 1  
Brackets  
& Rails

 2  
Base  
Mounts &  
Accessories

 3  
Optical  
Mounts

 4  
Optical  
Positioners

 5  
Base  
Positioners

 6  
Translation &  
Rotation  
Stages

 7  
Motorised  
Positioners &  
Controllers

 8  
Fine  
Adjustment  
Screws

 9  
Opto-  
Mechanics &  
Sets

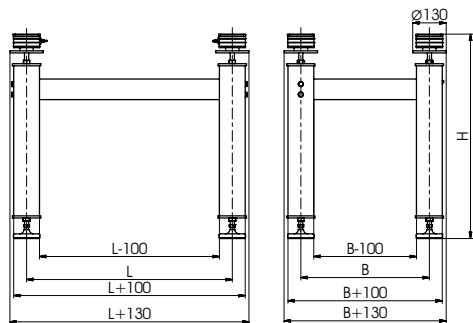
 10  
Light Test &  
Measurement  
Instruments

 11  
Lasers &  
Accessories

12

## 1TS-AR Rubber Leveling Element

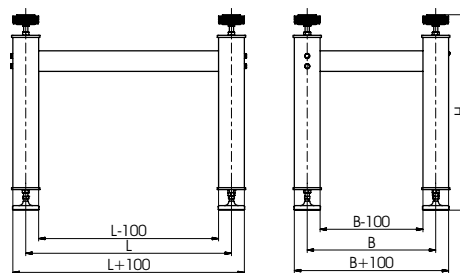
Model	B, mm	L, mm	H, mm
1TS05-07-05-AR	500	700	660±25
1TS05-07-06-AR	500	700	760±25
1TS05-12-05-AR	500	1200	660±25
1TS05-12-06-AR	500	1200	760±25
1TS065-12-05-AR	650	1200	660±25
1TS065-12-06-AR	650	1200	760±25
1TS065-18-05-AR	650	1800	660±25
1TS065-18-06-AR	650	1800	760±25
1TS065-22-05-AR	650	2200	660±25
1TS065-22-06-AR	650	2200	760±25
1TS08-12-05-AR	800	1200	660±25
1TS08-12-06-AR	800	1200	760±25



1TSXX-XX-XX-AP

## 1TS-AS Solid Leveling Element

Model	B, mm	L, mm	H, mm
1TS05-07-05-AS	500	700	660±25
1TS05-07-06-AS	500	700	760±25
1TS05-12-05-AS	500	1200	660±25
1TS05-12-06-AS	500	1200	760±25
1TS065-12-05-AS	650	1200	660±25
1TS065-12-06-AS	650	1200	760±25
1TS065-18-05-AS	650	1800	660±25
1TS065-18-06-AS	650	1800	760±25
1TS065-22-05-AS	650	2200	660±25
1TS065-22-06-AS	650	2200	760±25
1TS08-12-05-AS	800	1200	660±25
1TS08-12-06-AS	800	1200	760±25

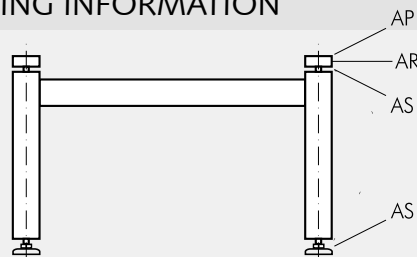


1TSXX-XX-XX-AR / 1TSXX-XX-XX-AS

## 1TS-AP Passive Air Leveling Vibration Isolator

Model	B, mm	L, mm	H, mm
1TS05-07-05-AP-200	500	700	700±15
1TS05-07-05-AP-500	500	700	700±15
1TS05-07-05-AP-1000	500	700	700±15
1TS05-07-06-AP-200	500	700	800±15
1TS05-07-06-AP-500	500	700	800±15
1TS05-07-06-AP-1000	500	700	800±15
1TS05-12-05-AP-200	500	1200	700±15
1TS05-12-05-AP-500	500	1200	700±15
1TS05-12-05-AP-1000	500	1200	700±15
1TS05-12-06-AP-200	500	1200	800±15
1TS05-12-06-AP-500	500	1200	800±15
1TS05-12-06-AP-1000	500	1200	800±15
1TS065-12-05-AP-200	650	1200	700±15
1TS065-12-05-AP-500	650	1200	700±15
1TS065-12-05-AP-1000	650	1200	700±15
1TS065-12-06-AP-200	650	1200	800±15
1TS065-12-06-AP-500	650	1200	800±15
1TS065-12-06-AP-1000	650	1200	800±15
1TS065-18-05-AP-200	650	1800	700±15
1TS065-18-05-AP-500	650	1800	700±15
1TS065-18-05-AP-1000	650	1800	700±15
1TS065-18-06-AP-200	650	1800	800±15
1TS065-18-06-AP-500	650	1800	800±15
1TS065-18-06-AP-1000	650	1800	800±15
1TS065-22-05-AP-200	650	2200	700±15
1TS065-22-05-AP-500	650	2200	700±15
1TS065-22-05-AP-1000	650	2200	700±15
1TS065-22-06-AP-200	650	2200	800±15
1TS065-22-06-AP-500	650	2200	800±15
1TS065-22-06-AP-1000	650	2200	800±15
1TS08-12-05-AP-200	800	1200	700±15
1TS08-12-05-AP-500	800	1200	700±15
1TS08-12-05-AP-1000	800	1200	700±15
1TS08-12-06-AP-200	800	1200	800±15
1TS08-12-06-AP-500	800	1200	800±15
1TS08-12-06-AP-1000	800	1200	800±15

## ORDERING INFORMATION



Type of **upper** leveling elements of **1TS** can be chosen from **1TS-AS**, **1TS-AR** or **1TS-AP** (see descriptions below). **Bottom** elements on **1TS** are of type **1TS-AS**.

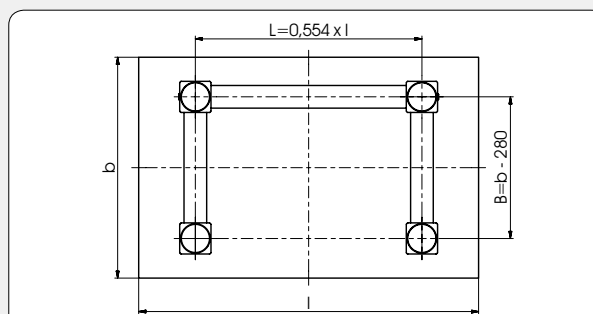
**Default** choice for **upper** elements of **1TS** is **1TS-AR** rubber leveling elements. Example:

**1TS05-07-05-AR** – table support sized **600×800×660 mm** (Width×Length×Height) with **4** pieces of **1TS-AR** leveling elements on top and **4** pieces of **1TS-AS** leveling element at the bottom.

For other types of leveling elements please append element abbreviation to product code. Examples:

**1TS05-07-06-AS** – size **600×800×760 mm** (Width×Length×Height), type of leveling elements – **1TS-AS** (**8** pieces, **4** on **top** and **4** at the **bottom**).

**1TS065-12-06-AP-200** – size **750×1300×800 mm** (Width×Length×Height), with **4** pieces of leveling elements type **1TS-AP-200** on top and **4** pieces of leveling elements type **1TS-AS** at the bottom.



Choosing the optimal support size for optical table

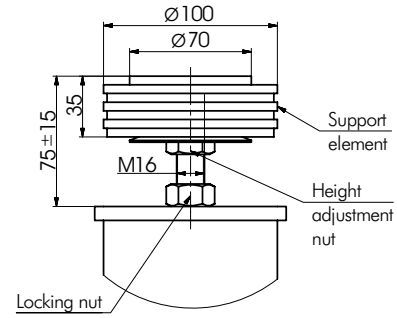


## Rubber Leveling Element

**1TS-AR**



**Rubber leveling element (1TS-AR)** ensures sufficient vibration isolation.  
**Max. load** per 4 isolators – **1500 kg**  
**Natural frequency** – **15-20 Hz**

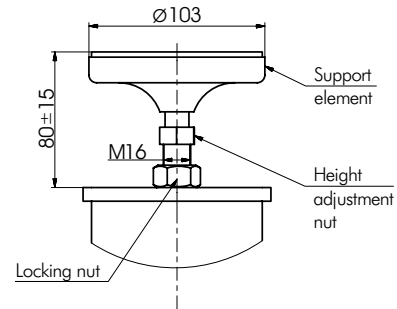


## Solid Leveling Element

**1TS-AS**



**Solid leveling element (1TS-AS)** is used, when no damping is needed.  
**Max. load** per 4 isolators – **3000 kg**



## Passive Air Leveling Vibration Isolator

**1TS-AP**

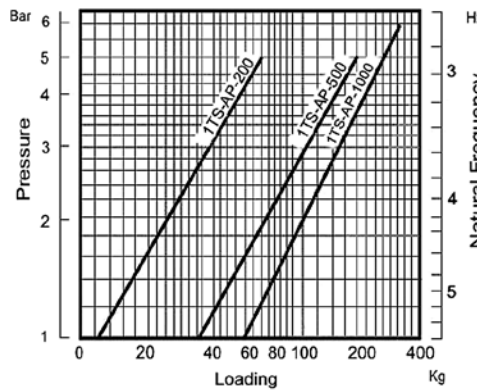


**Passive air leveling vibration isolator 1TS-AP** is a low height, low stiffness air spring isolator mount suitable for both passive and dynamic applications where a support natural frequency as low as 3-5Hz is required.

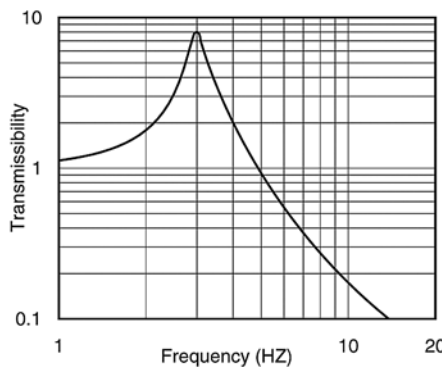
Typical passive applications include the protection of vibration sensitive equipment such as co-ordinate measuring machines, metrology inspection devices, isolation tables and electron microscopes.

The **1TS-AP** isolator body is made of high elasticity, oil resistant and non-aging CR grade elastomer. Pressure and bottom plates made of galvanized steel.

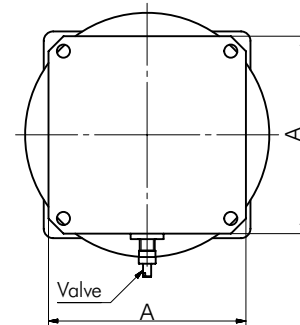
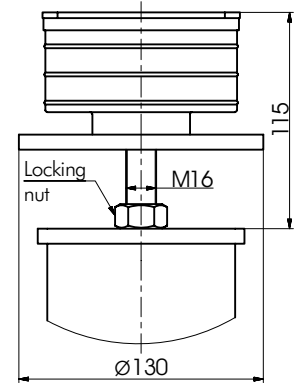
Inflation is either through the 'moulded in' standard tyre valve or by connection to a permanent air supply.



Load/Pressure diagram



Transmissibility Curve



Model	Max. load, kg (for 4 isolators)	Max. pressure, bar	A, mm
1TS-AP-200	195	5	75
1TS-AP-500	540	5	105
1TS-AP-1000	840	6	130



www.standa.it

e-mail: sales@standa.it



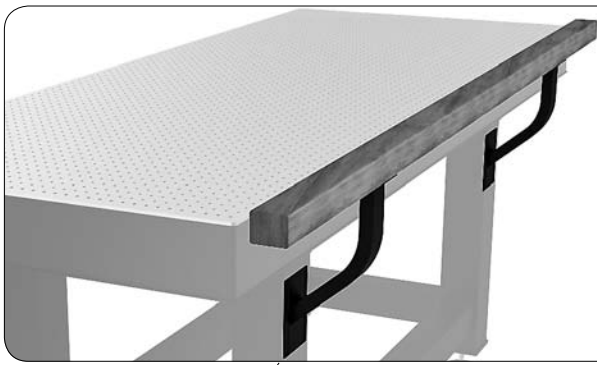
Fax: +370-5-2651483

Phone: +370-5-2651474



**standa**





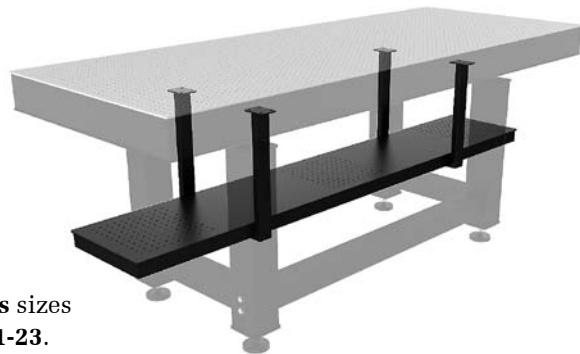
**Armrest** guards the honeycomb table from impacts of your body. This allows you to work at the table like at a conventional table, using microscope and other equipment.

Optionally you may order workstation with two **Armrests** on the opposite sides.



**Casters** – made of high-quality nylon, high abrasion resistant, low rolling resistant, smooth running performance on even floors, shock and impact-resistant, corrosion-resistant.

**Laser shelves** are optional breadboards. They save space when installing a laser and other equipment beneath the honeycomb table tops. A shelf stays mechanically coupled to the table top.



**Laser shelves** sizes are on **page 1-23**.

## ORDERING EXAMPLE

### **1TS065-12-06-AR-CA**

Table support sized **750×1300×760 mm** (Width×Length×Height);

**4 pieces** of **1TS-AR** leveling elements on top;

**4 pieces** of **1TS-AS** leveling element at the bottom;

**CA** – casters.

- Optical Tables 1
- Brackets & Rails 2
- Base Mounts & Accessories 3
- Optical Mounts 4
- Optical Positioners 5
- Base Positioners 6
- Translation & Rotation Stages 7
- Motorised Positioners & Controllers 8
- Fine Adjustment Screws 9
- Opto-Mechanics & Sets 10
- Light Test & Measurement Instruments 11
- Lasers & Laser Accessories 12



# Active Vibration Isolation System

**1TS-140**
**1TS-140B**
**1TS-140B-ALE**

**1TS-140**

- The isolation of the 1TS-140 begins at 0,7 Hz, increasing rapidly to 40 dB beyond 10 Hz
- The lack of any low frequency resonance means much better performance than with common passive damping approaches
- The inherent stiffness of the 1TS-140 imparts excellent directional + positional stability
- The outstanding isolation performance of the 1TS-140 includes all six translational and rotational vibration modes

## SPECIFICATIONS

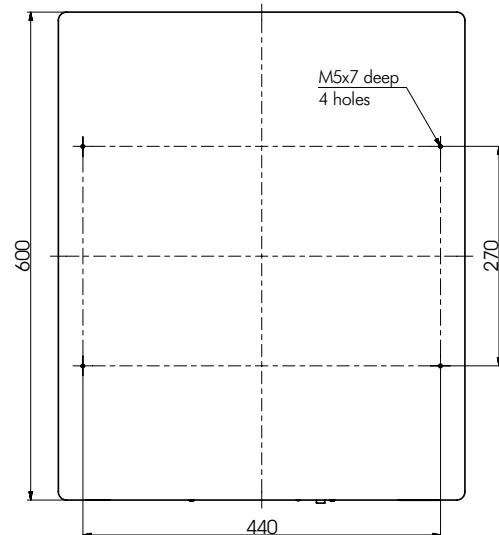
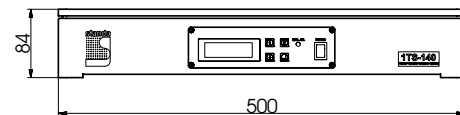
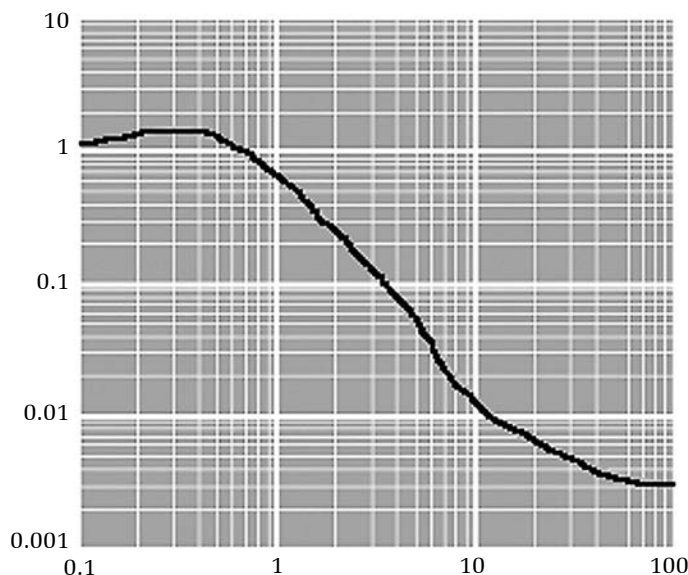
Isolation	dynamic 0.7 Hz to 200 Hz, mainly passive at higher frequencies, although for good stability the feedback is active to at least 2 KHz
Transmissibility	See attached curve. Above 10 Hz transmissibility <0.01 (-40dB)
Maximum load	140 kg
Dimensions	500x600x84 mm
Self - weight	23 kg

## Electrical

Safety class	1
Power consumption	maximum 10 W when isolating, maximum 20W during load adjustment
Input voltage	90 – 120V AC, 47 – 63 Hz 200 – 240V AC, 47 – 63 Hzz
Fuses	2x1.6A/250V slow, located in the power socket on the rear side of the unit

## Normal Environmental Conditions

Protection class	IP 20
Temperature range	5°C - 40°C
Relative Humidity	10 - 90% (5 - 30°C) 10 - 60% (30 - 40°C)
Application	Indoor
Altitude	up to 2000 m (6.500 ft)


**1TS-140**
**Transmissibility Curve (z)**


**1TS-140 is compact dynamic anti-vibration system**, which offers isolation against all six translational and rotational vibration modes. These moderately priced dynamic vibration isolation systems achieve in a very small volume better isolation than is possible with the biggest and most expensive passive systems. Inertial feedback using piezoelectric force motors provides not only isolation from building vibrations, but also isolation from vibration sources placed on the system itself. This means, for example, that a delicate microscope isolated by the system will remain at rest despite forces being applied via the operator's hands. The inherent stiffness of the systems, some 200 – 500 times greater than that of a 1 Hz resonance passive isolator, imparts excellent directional and positional stability.



www.standa.it

e-mail: sales@standa.it



Phone: +370-5-2651483

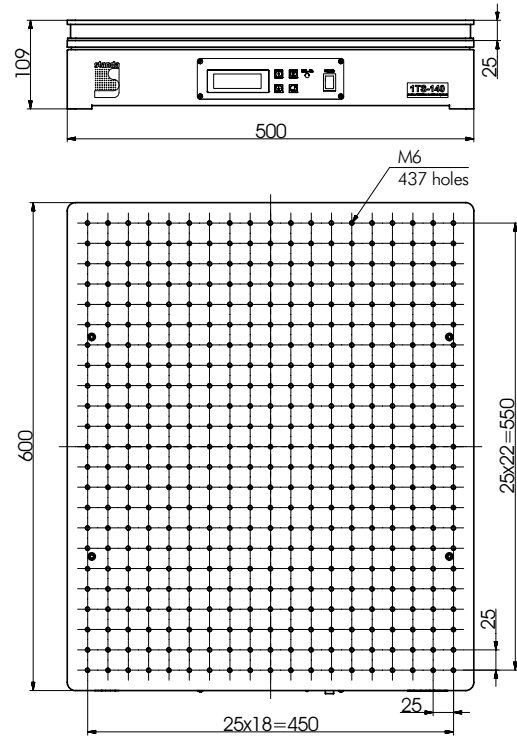
Fax: +370-5-2651474


**standa**



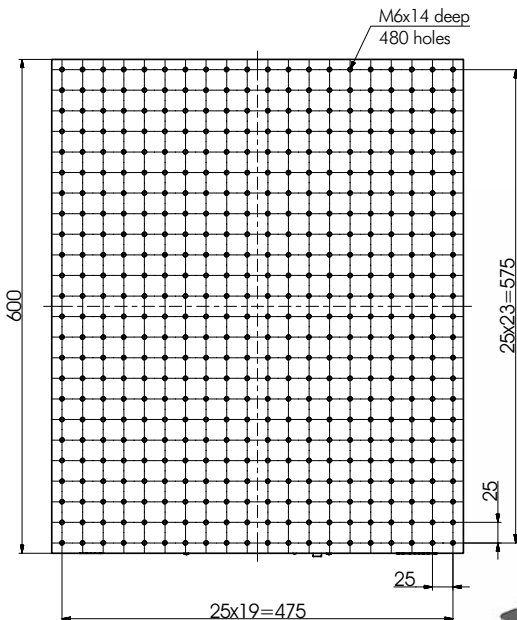
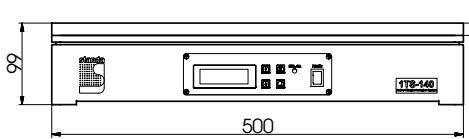

## Active Vibration Isolation System with Breadbord

**1TS-140B**



## Active Vibration Isolation System with Aluminium Breadbord

**1TS-140B-ALE**



**1TS-140**  
*Example of use*



### ORDERING INFORMATION

- 1TS-140** – solid board without holes
- 1TS-140B** – with breadbord **1HB05-06-025-001**
- 1TS-140B-ALE** – with aluminium breadbord **1B-ALE-50-60-015**

- 1 Optical Tables
- 2 Brackets & Rails
- 3 Base Mounts & Accessories
- 4 Optical Mounts
- 5 Optical Positioners
- 6 Base Positioners
- 7 Translation & Rotation Stages
- 8 Motorised Positioners & Controllers
- 9 Fine Adjustment Screws
- 10 Opto-Mechanics & Sets
- 11 Light Test & Measurement Instruments
- 12 Lasers & Laser Accessories

# Active Vibration Isolation Workstation

**1TS-140W**  
**1TS-140WB**  
**1TS-140WB-ALE**



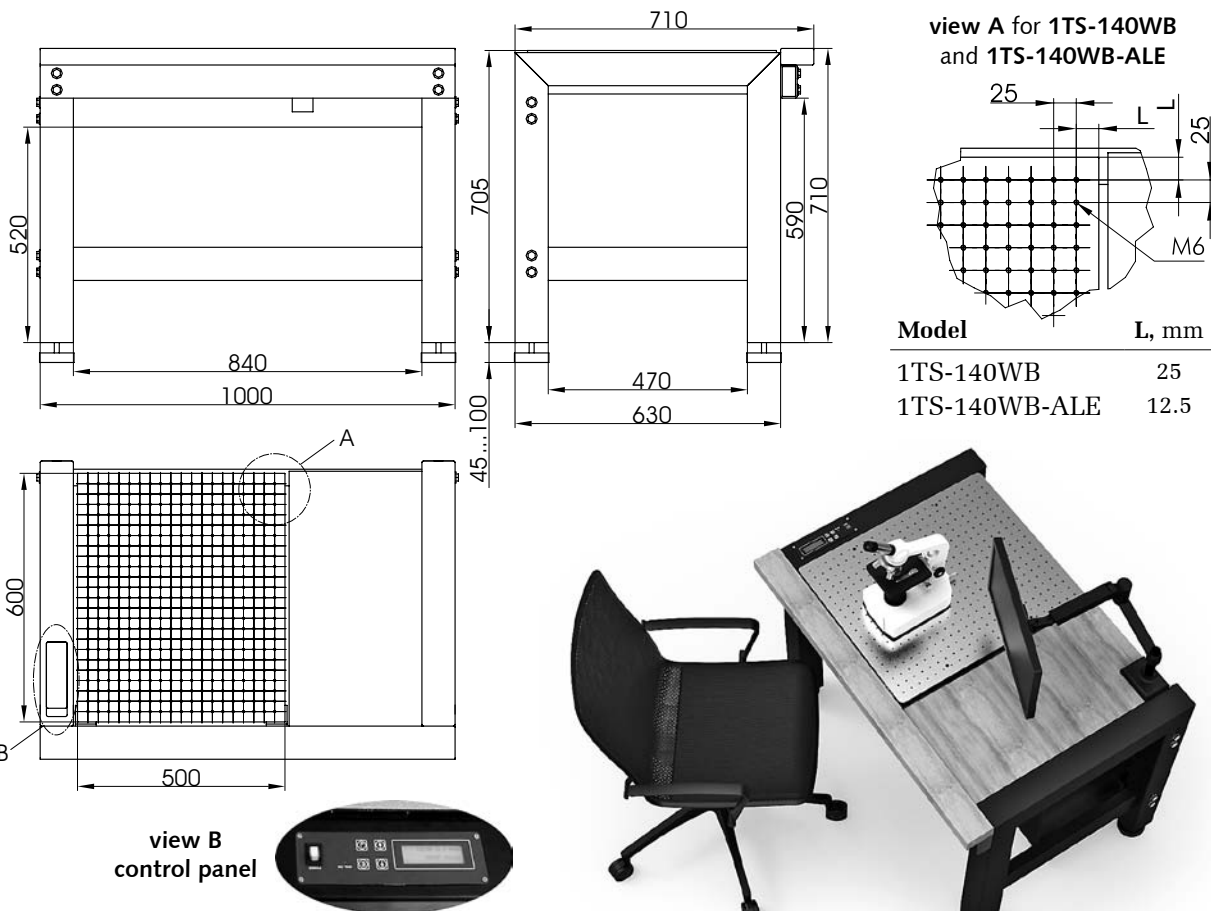
## APPLICATIONS

- Scanning probe microscopy
- Scanning electron microscopy
- Scanning near-field optical microscopy / NSOM
- Control laser microscopy
- Interferometry
- Metrology / Profilometry
- Nano indentation
- Nano lithography
- Ultrathin film applications
- Analytical balances
- Bio-physical measurement
  - \* Single molecule investigations
  - \* Cell micro infection
  - \* Patch clamp
  - \* Cell manipulation
  - \* IVF techniques

Active vibration isolation workstation comprises of ergonomic rigid frame, guarding armrest and supplied with three modifications of active vibration isolation system: 1TS-140 with solid surface, 1TS-140B with honeycomb breadboard 1HB05-06-025-001 and 1TS-140B-ALE with aluminium breadboard 1B-ALE-50-60-015. The control panel is built into the frame and allows comfortable work. This system is extremely convenient to use. Load compensation is performed automatically on switching on the power. If the load is changed whilst the system is isolating, it automatically readjusts and then returns

to the isolation mode. The workstation is design is optimized for such delicate instruments as AFM's, Laser Scanning Microscopes, SNOM's, profilometers, nanoindenters, etc.

Upon request we can make custom workstations with working surfaces 400 x 450 mm (maximum load 150 kg) and 600 x 800 mm (maximum load 120 kg).



## ORDERING INFORMATION

- 1TS-140W** – with active system **1TS-140**  
**1TS-140WB** – with active system **1TS-140B**  
**1TS-140WB-ALE** – with active system **1TS-140B-ALE**

more info about Active System 1TS-140 on page 1-16.

**Ideal for use with interferometers, atomic force microscopes, scanning near field optical microscopes, and other equipment sensitive to low frequency vibrations.**



www.standa.it

e-mail: sales@standa.it



Fax: +370-5-2651483

Phone: +370-5-2651474



**standa**



Optical  
Tables

1

Brackets  
& Rails

2

Base  
Mounts &  
Accessories

3

Optical  
Mounts

4

Optical  
Positioners

5

Base  
Positioners

6

Translation &  
Rotation  
Stages

7

Motorised  
Positioners &  
Controllers

8

Fine  
Adjustment  
Screws

9

Opto-  
Mechanics &  
Sets

10

Light Test &  
Measurement  
Instruments

11

Lasers &  
Accessories

12

## Active Vibration Isolation System

### 1TS-AVI200LP



This moderately priced dynamic vibration isolation system achieves in a very small volume better isolation than is possible with the biggest and most expensive passive systems. Inertial feedback is used via force transducers to provide not only isolation from building vibrations, but also isolation from vibration sources placed on the system itself. This means, for example, that a delicate microscope isolated by the system will remain at rest despite forces being applied via the operator's hands.

The inherent stiffness of the system, typically 500 times greater than that of a 1 Hz resonance passive isolator, imparts excellent directional and positional stability. The lack of any low frequency resonance, a resonance which plagues all passive systems, allows the systems to be stacked for super-isolation in severe environments.

The system is ideal for supporting delicate Fabry-Perot interferometers and tunnel-microscopes, allowing the ultimate performance to be achieved from these and other high resolution instruments. The tables have also proved to be extremely successful for supporting sensitive experiments, such as the troughs for liquids used in measurements on Langmuir-Blodgett films.

**1TS-AVI200LP** is an adaptable system consisting of two modules. Each module by itself isolates against vertical and horizontal translations and against rotations about one horizontal axis. The combination of two modules isolates against all six possible translational and rotational vibrations. The modules cannot be used separately.

Isolation of the standard **1TS-AVI200LP** system begins at about 1 Hz, increasing rapidly to at least 35 dB beyond 10 Hz. This system offers excellent isolation in the typical laboratory environment.

**1TS-AVI200LP**, a compact modular dynamic antivibration system offering isolation against all six translational and rotational vibrations.

#### SPECIFICATIONS

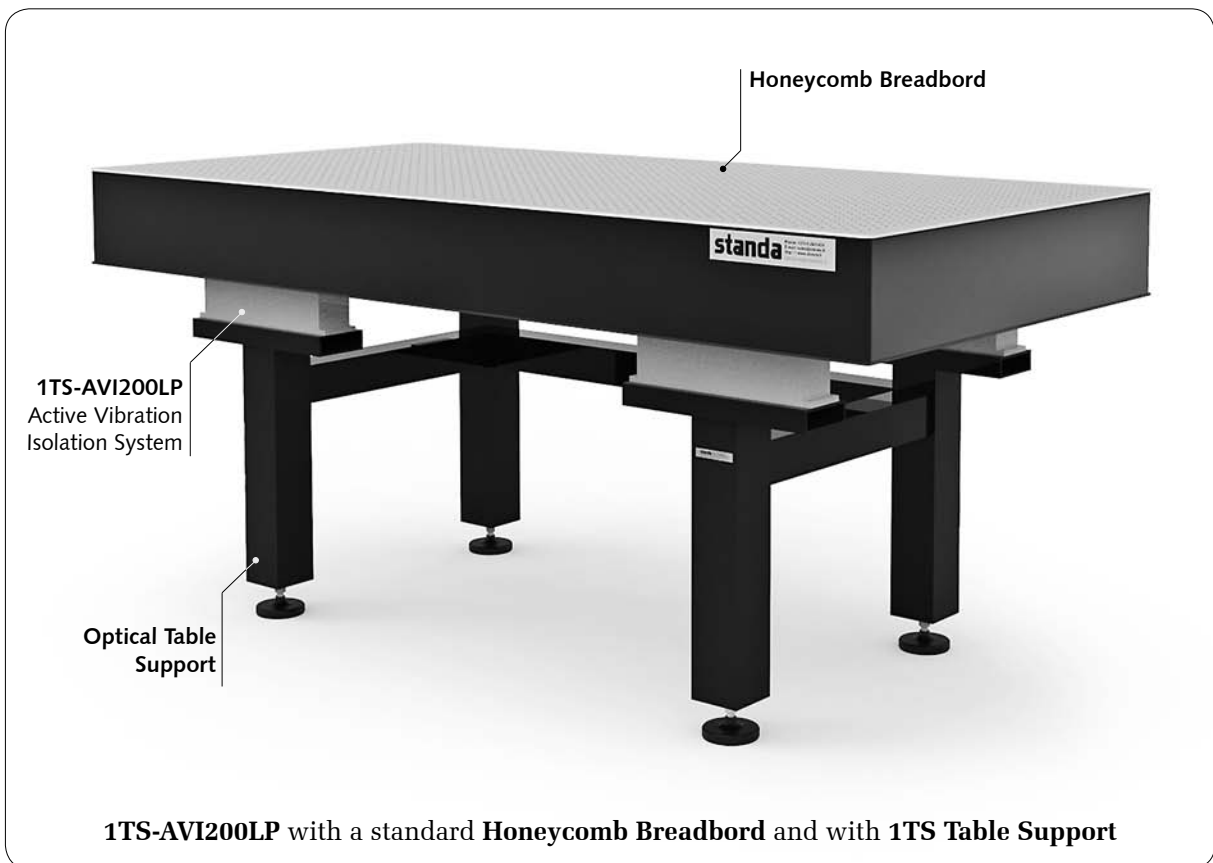
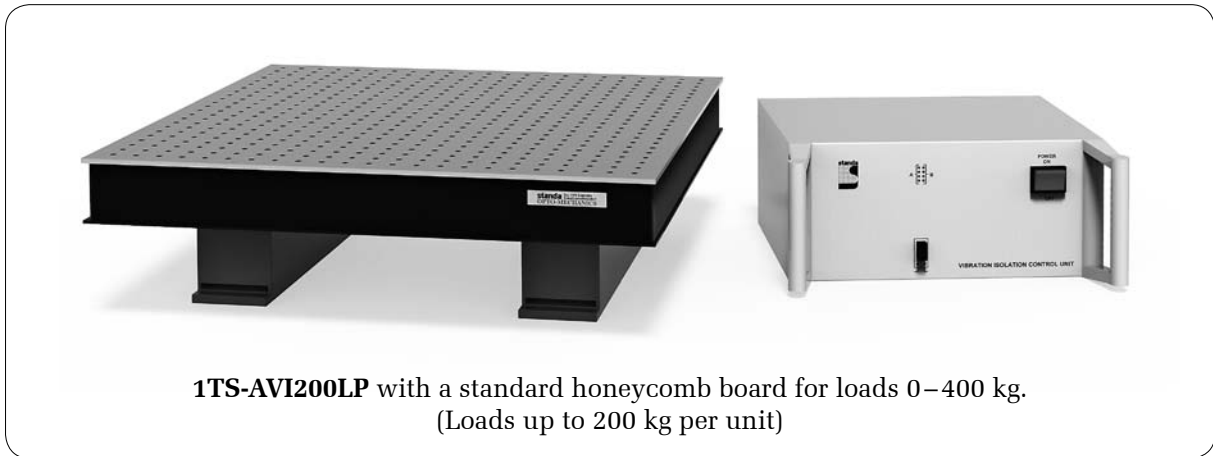
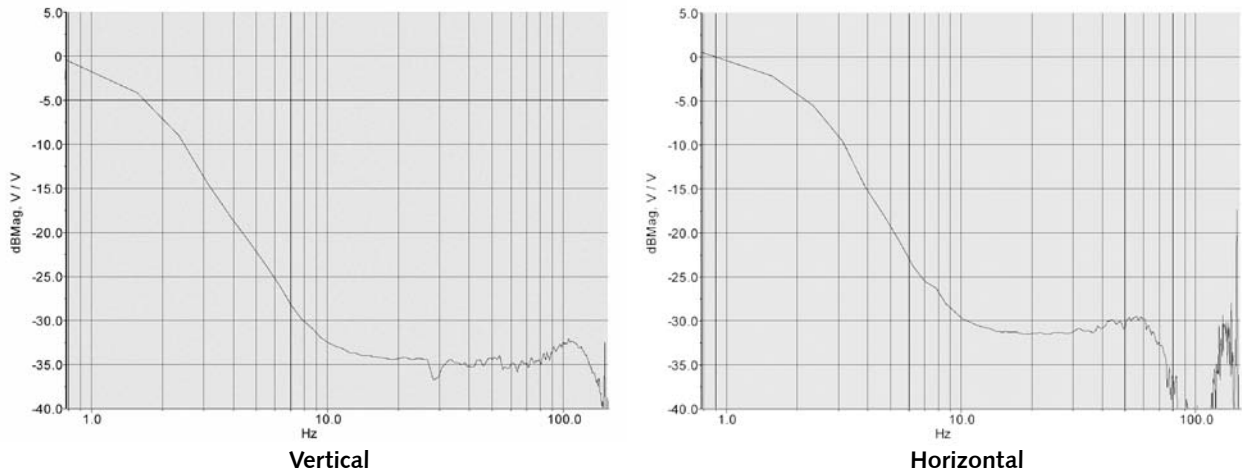
	1TS-AVI200LPS-LP	1TS-AVI200LPM-LP
Isolation	dynamic 1.2 Hz to 200 Hz passive beyond 200 Hz	
Transmissibility	See transmission curve. Above 10 Hz transmissibility <0.017 (-35 dB)	
Correction forces	max. horizontal 4 N vertical 8 N	
Static Compliance	approx. 3,5 μm/N vertical and 7 μm/N horizontal	
Maximum Load	400 kg (single unit: 200 kg)	
Size (single unit)	350×90×115 mm	600×90×115 mm
Weight	10 kg – (single unit)	

#### Control Unit

Safety class	1
Power consumption	typically 9 W
Input voltage	90–125 VAC / 200–250 VAC, +/- 10% , 50–60 Hz
Fuses	2×1.6 A / 250 V slow, located in the power socket on the rear side of the unit
Overload Indication	8 LEDs
Monitor Signal	A multiplexed signal for display on oscilloscope shows vibration levels with and without isolation – for diagnostic purpose only

- 1 Optical Tables
- 2 Brackets & Rails
- 3 Base Mounts & Accessories
- 4 Optical Mounts
- 5 Optical Positioners
- 6 Base Positioners
- 7 Translation & Rotation Stages
- 8 Motorised Positioners & Controllers
- 9 Fine Adjustment Screws
- 10 Opto-Mechanics & Sets
- 11 Light Test & Measurement Instruments
- 12 Lasers & Laser Accessories

TRANSMISSIBILITY



e-mail: sales@standa.it www.standa.it



Phone: +370-5-2651474 Fax: +370-5-2651483



**standa**

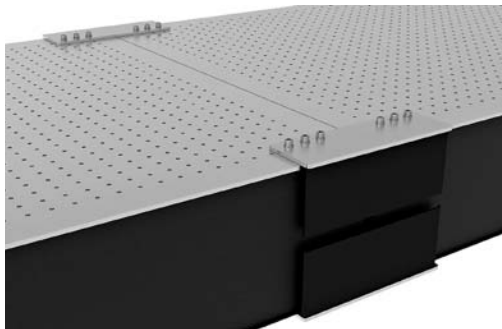


- Optical Tables 1
- Brackets & Rails 2
- Base Mounts & Accessories 3
- Optical Mounts 4
- Optical Positioners 5
- Base Positioners 6
- Translation & Rotation Stages 7
- Motorised Positioners & Controllers 8
- Fine Adjustment Screws 9
- Opto-Mechanics & Sets 10
- Light Test & Measurement Instruments 11
- Lasers & Laser Accessories 12

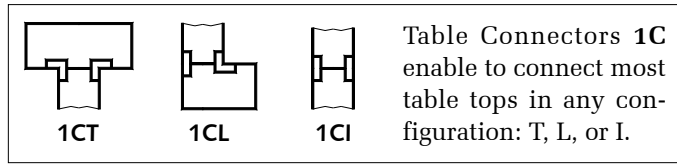


## Table Connectors

### 1C



- Link table tops together in various configurations
- Easy assemblage
- On request easily adapted to any Table Top



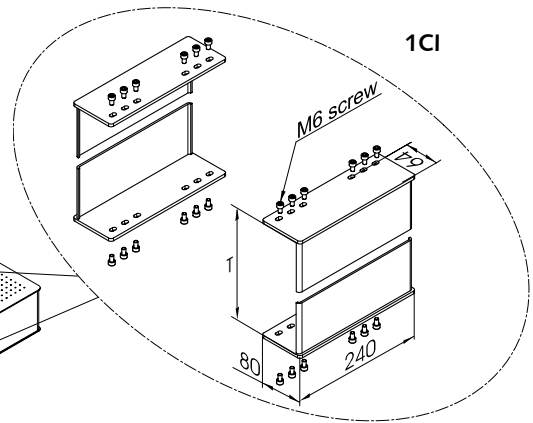
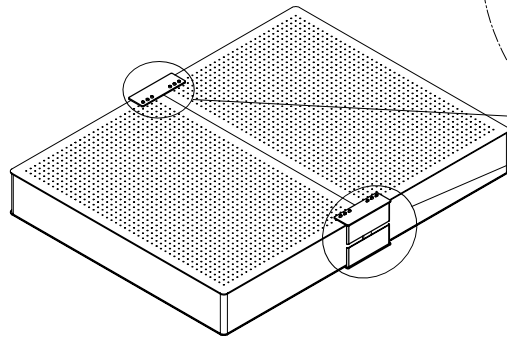
**Table Connectors 1C** render quick and reliable way to link table tops together. The tables, being linked, usually have **M6** tapped mounting holes on their tops and bottoms. The same holes are used for fastening to **1C**.

At minimal deflection (see note in **1TS**) the rigidity of the linkage is no more than **15 μm/m** under **100 kg** load placed on it.

Below is the table of codes for ordering of a **standard** Table Connecting system.

You are welcome to request custom systems.

Model	T, mm
1CT	200
1CL	200
1CI	200
1CT-120	120
1CL-120	120
1CI-120	120
1CT-70	70
1CL-70	70
1CI-70	70



T – the **Thickness** of a tabletop

*for more **Optical Table** connection options  
please visit **WWW.STANDA.LT***



- Optical Tables 1
- Brackets & Rails 2
- Base Mounts & Accessories 3
- Optical Mounts 4
- Optical Positioners 5
- Base Positioners 6
- Translation & Rotation Stages 7
- Motorised Positioners & Controllers 8
- Fine Adjustment Screws 9
- Opto-Mechanics & Sets 10
- Light Test & Measurement Instruments 11
- Lasers & Laser Accessories 12



e-mail: sales@standa.lt

www.standa.lt



Phone: +370-5-2651474

Fax: +370-5-2651483



**standa**



# Table Connectors

**new**

**1CI-XXX**



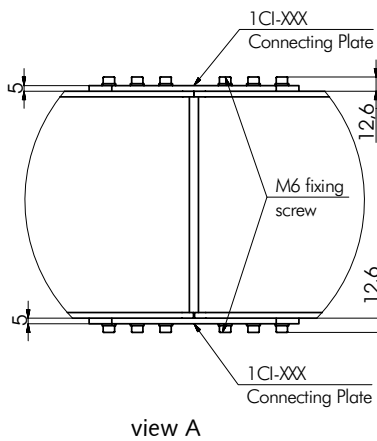
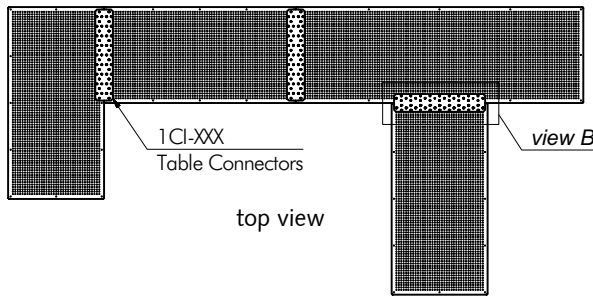
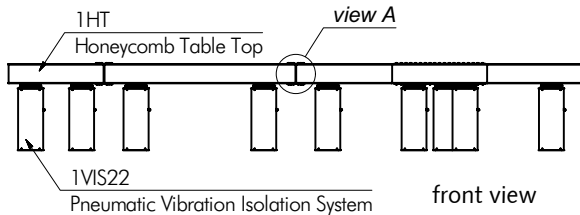
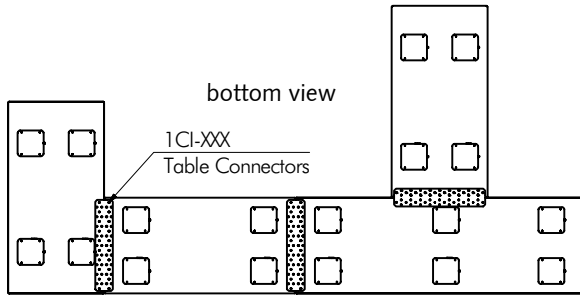
www.standa.it

e-mail: sales@standa.it



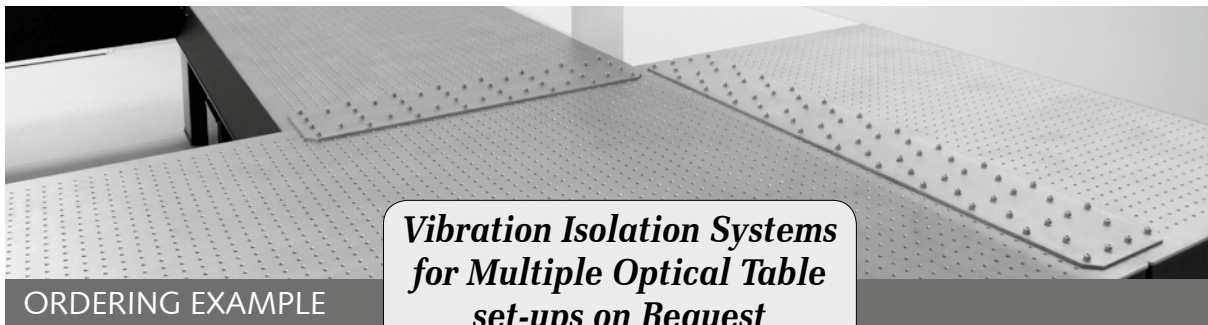
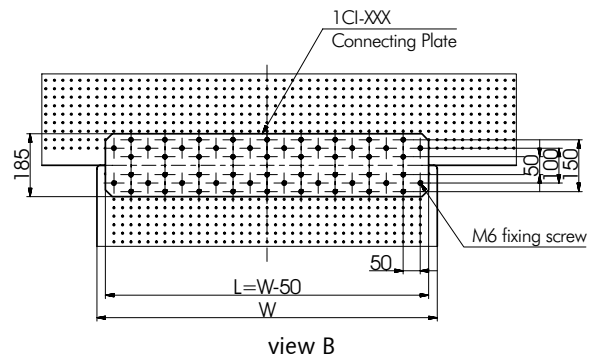
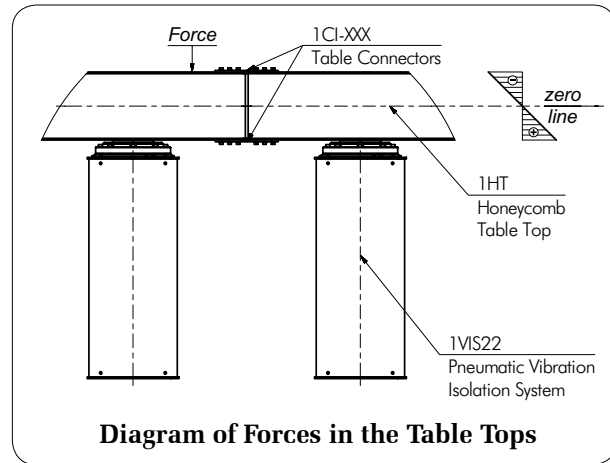
Fax: +370-5-2651483

Phone: +370-5-2651474



- Recommended for use with pneumatic vibration isolation systems
- End-to-end, side-to-side or side-to-end connectivity
- Individual assembly and testing of each system

STANDA optical table connector system 1CI-XXX allow users to connect two or more optical tables without compromising on rigidity or damping properties. Various combinations like "T", "U" or "L" shaped table systems can be obtained using STANDA connecting system. The connecting system uses two 5 mm thick stainless steel plates attached to the top and bottom of holding area. This distributes the shear forces equally along the joined area (see drawing below). Once connected, the table system can be handled like monolithic structure.



**Vibration Isolation Systems for Multiple Optical Table set-ups on Request**

**ORDERING EXAMPLE**

**1CI-XXX**

**XXX=L=W-50**

The lenght "L" of Table Connectors equal the width "W" of Honeycomb Table Top 1HT/1HB minus 50mm

**Examples of codes for 1CI-XXX:**

- 1CI-950** for connection of 1000mm width Honeycomb Tables 1HT10-XX-XX
- 1CI-1150** for connection of 1200mm width Honeycomb Tables 1HT12-XX-XX

**standa**



- Optical Tables 1
- Brackets & Rails 2
- Base Mounts & Accessories 3
- Optical Mounts 4
- Optical Positioners 5
- Base Positioners 6
- Translation & Rotation Stages 7
- Motorised Positioners & Controllers 8
- Fine Adjustment Screws 9
- Opto-Mechanics & Sets 10
- Light Test & Measurement Instruments 11
- Lasers & Accessories 12

# Instrument Shelves

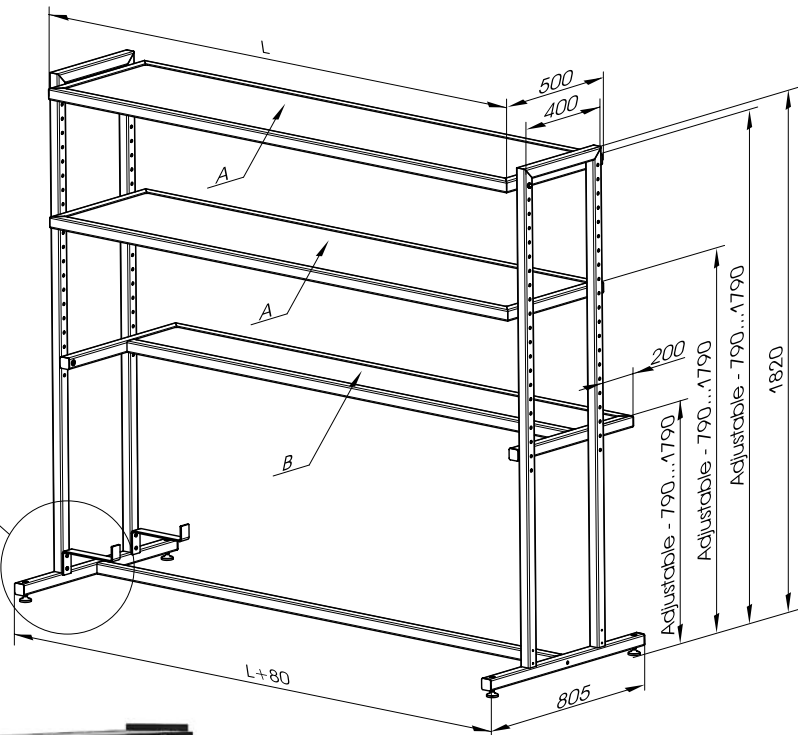
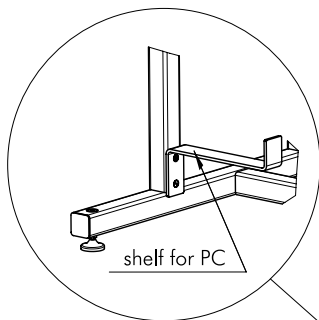
**1IS**



- Free-standing
- Can be positioned anywhere over the table
- Does not affect vibration isolation
- Adjustable shelf height
- Sturdy metal frame supports heavy loads

**Instrument Shelves 1IS** provide convenient off-the-table mounting and storage for power supplies, controllers, oscilloscopes and other instruments. They are not connected with the table and does not affect vibration isolation. The height of shelves can be adjusted easily. The space saving shelf also allows wires and cables to be neatly routed away from critical setups.

Model	L, mm
1IS200	2050
1IS300	3050
1ISXXX	any sizes by request



**Examples of codes for 1IS200:**

1IS200-A	one A shelf
1IS200-B	one B shelf
1IS200-AA	two A shelves
1IS200-AB	one A shelf and one B shelf
1IS200-AAB	two A shelves and one B shelf



e-mail: sales@standa.it

www.standa.it



Phone: +370-5-2651474

Fax: +370-5-2651483



**standa**



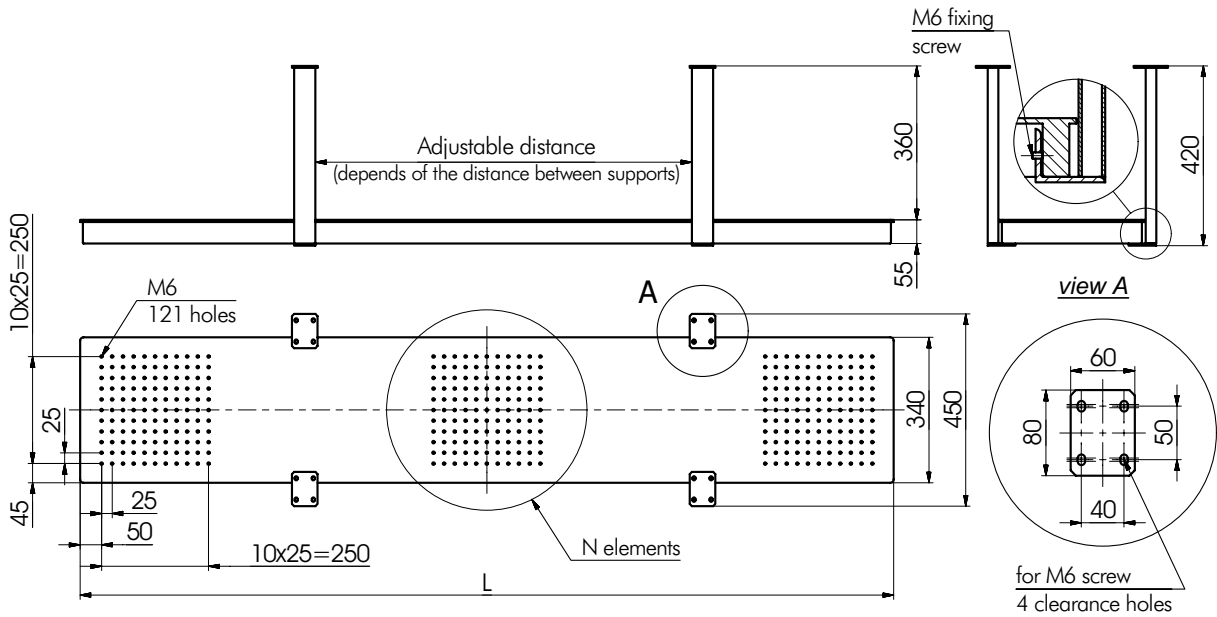
# Laser Shelves

## 1LS52



**Laser shelves 1LS52** are optional breadboards. They save space when installing a laser and other equipment beneath optical table tops. A shelf stays mechanically coupled to the table top. The shelves have a pattern of **M6** holes.

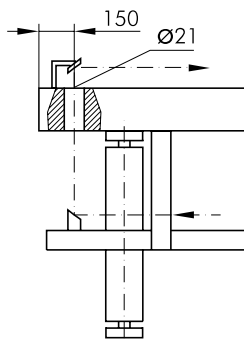
**1LS52** has **M6** screws to attach **directly** to the bottom of a table top. So it can be used with any table top, with any support, or vibration isolation. Location of attachment (holes) can be standard, or specified by a customer.



**1LS52** attach anywhere – no restrictions.

Model	L, mm	N	Weight, kg	Load capacity, kg
1LS52-09	900	2	26	200
1LS52-19	1900	3	47	200

Shelves of custom sizes are available.



**Laser Ports** in a **Table Top** are used to let a laser beam or cables through. Standard location of a port is chosen for use with the Laser Shelves **1LS52**.

When ordering, append letter **“H”** to the code of a Honeycomb Table Top e.g. 1HT10-20-20H (see article 1HT).



www.standa.it

e-mail: sales@standa.it

Fax: +370-5-2651483

Phone: +370-5-2651474

**standa**

- Optical Tables 1
- Brackets & Rails 2
- Base Mounts & Accessories 3
- Optical Mounts 4
- Optical Positioners 5
- Base Positioners 6
- Translation & Rotation Stages 7
- Motorised Positioners & Controllers 8
- Fine Adjustment Screws 9
- Opto-Mechanics & Sets 10
- Light Test & Measurement Instruments 11
- Lasers & Laser Accessories 12



Protective Screens

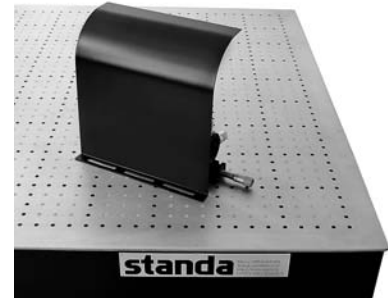
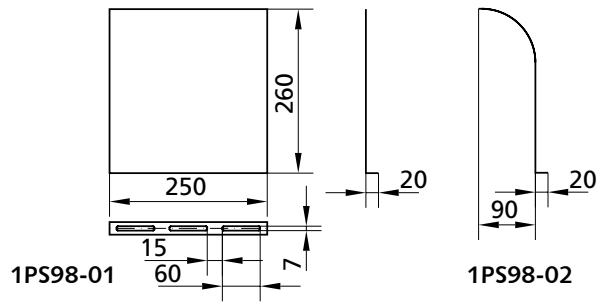
1PS98



1PS98-01



1PS98-02

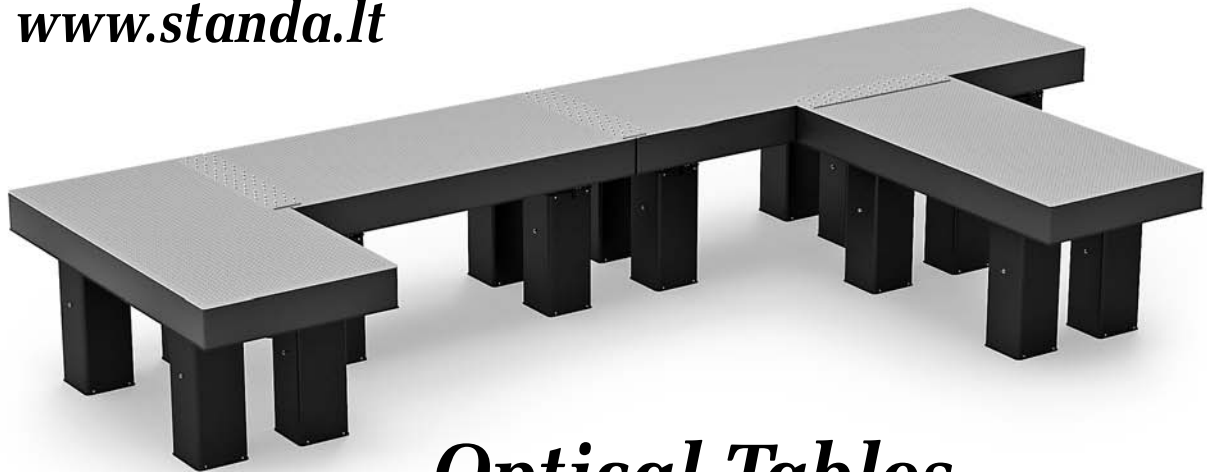


**Protective Screens 1PS98** are designed to protect an optical setup from flashes, glitters and other undesired optical disturbances. The Protective Screens 1PS98-01 and 1PS98-02 are provided with three mounting slots and can be mounted anywhere on the table.

The screens are produced from steel tin-plate of black finish.

Model	Shape	Weight, kg
1PS98-01	Straight	0.5
1PS98-02	Bent	0.5

*More information at  
[www.standa.it](http://www.standa.it)*



***Optical Tables  
of any sizes and configurations !!!***



e-mail: [sales@standa.it](mailto:sales@standa.it)

[www.standa.it](http://www.standa.it)



Phone: +370-5-2651474 Fax: +370-5-2651483



**standa**



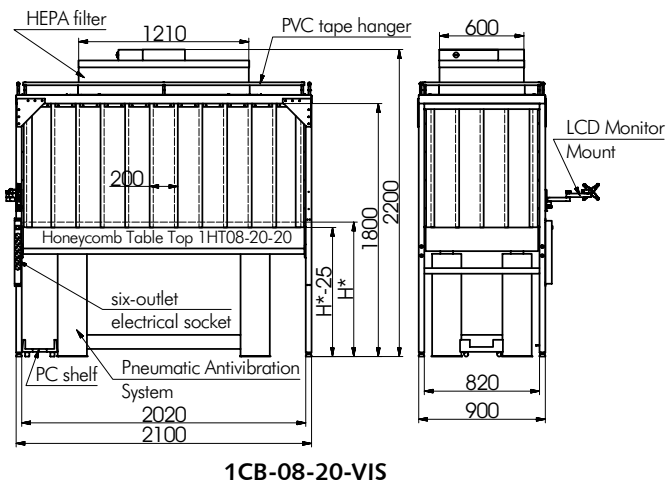
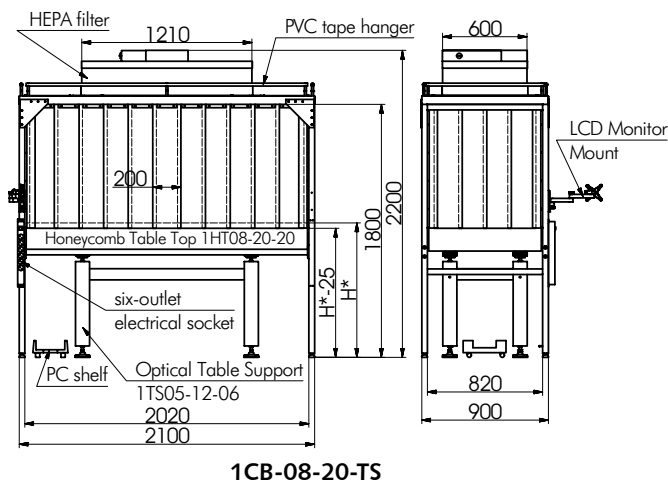
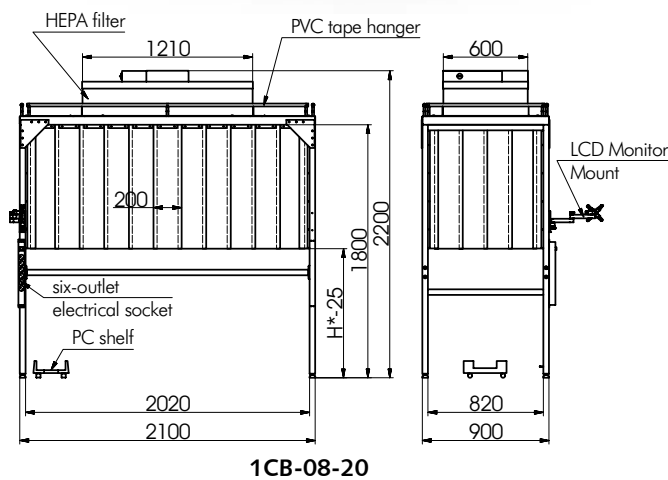
# Laminar Tabletop Workstation

## 1CB

- Extremely quiet fan <50 dBA
- Odorless plastic curtains
- HEPA air filter

**Laminar Flow Workstation 1CB** is designed to provide a clean environment in any laboratory or workshop. Our filtering unit **1CB** consists of a **HEPA air filter** and a **steel frame** complete with odorless plastic curtains. The vertical aligned flow of filtered air ensures that clean air flows uniformly over the workstation, keeping your samples, or optics in a clean managed environment.

In a laser optics manufacturing, a laser repair or research environment, cleanliness of optical surfaces is imperative. The millions of particles present in most laboratories can fall onto optical surfaces, or they can be carried to optical surfaces by the energy in a laser beam. Once on the surface the lasing beam will burn the particles onto the coating, causing attenuation of the intra cavity energy. In addition the burnt particle will absorb more energy and cause localized heating on the surface of the optic. The localized heating can cause thermal lensing and damage to the optical coating. When adding the **1CB** to your optical table you remove the particles and therefore the potential damage to your optics.



### ORDERING INFORMATION

As an example model – **1CB-08-20-TS** combines the proven **1HT08-20-20 (800 × 2000 × 200 mm)** honeycomb tabletop, the sturdy **1TS05-12-06-AR** table support and the NEW **1CT-08-20** air filter unit complete with curtains. For greater **stability** and **performance** we suggest ordering a **Vibration Isolation System 1VIS (1CB-08-20-VIS)** instead of static rigid supports 1TS.

If you already have your optical table set up and wish to add the filtered air unit to your table, we can provide any custom size to suit your needs. Quantity of **HEPA filters** can be increased according to the customer's application dimensions.



www.standa.it

e-mail: sales@standa.it



Phone: +370-5-2651483

Fax: +370-5-2651474



**standa**



Optical  
Tables

1  
Brackets  
& Rails

2  
Base  
Mounts &  
Accessories

3  
Optical  
Mounts

4  
Optical  
Positioners

5  
Base  
Positioners

6  
Translation &  
Rotation  
Stages

7  
Motorised  
Positioners &  
Controllers

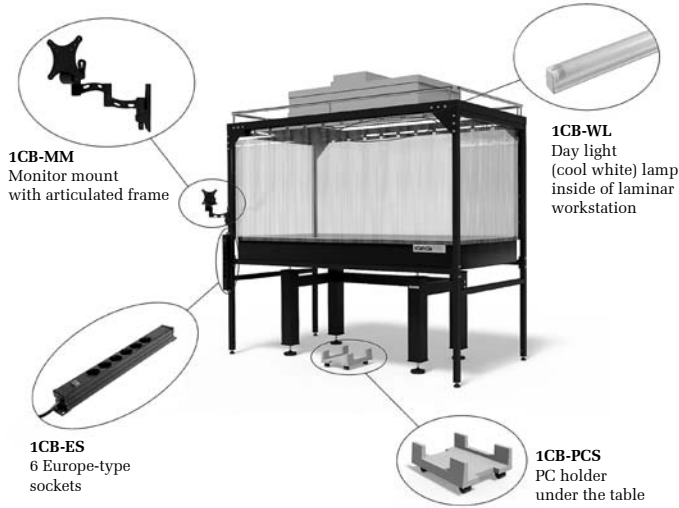
8  
Fine  
Adjustment  
Screws

9  
Opto-  
Mechanics &  
Sets

10  
Light Test &  
Measurement  
Instruments

11  
Lasers &  
Accessories

12



### Laminar Tabletop workstation included features:

- 1CB-MM** – Monitor mount with articulated frame
- 1CB-ES** – 6 Europe-type sockets
- 1CB-WL** – Day light (cool white) lamp
- 1CB-PCS** – PC holder under the table

Featured units can be also ordered separately.

### Filter specification

- Low sound, low watts, low profile, and low operating costs.
- Three speed switch features low, medium, and high settings; standard on all 2 ft × 4 ft (600 mm × 1210 mm) and 2 ft × 3.5 ft (600 mm × 1057 mm) units.
- Solid-state speed control standard on 2 ft × 2 ft (600 mm × 600 mm) and 2 ft × 3 ft (600 mm × 905 mm) units.
- Forward-inclined centrifugal-type fan.
- High Efficiency Particulate Air (HEPA) UL 900 Filter: 99.99 % efficient @ 0.3 micron.
- Extremely quiet <50 dBA.
- Snap-in pre filter allows for easy replacement and maintenance.
- Mill finished aluminum exterior.
- Tested to IEST recommended RPC standards.
- UL listed (120 V, 240 V, 277 V) with standard UL 900 filter.

### ORDERING INFORMATION

#### 1CB-08-20

**Laminar Flow Workstation**  
Air filter unit complete with curtains, for tabletop sized 800x2000 mm.  
Does not include tabletop or its legs.

#### 1CB-08-20-TS

Includes:

#### Laminar Flow Workstation with rigid Table Supports

- tabletop 1HT08-20-20 (800 × 2000 × 200 mm);
- rigid table support 1TS05-12-06-AR;
- 1CB-08-20 air filter unit complete with curtains.

#### 1CB-08-20-VIS

Includes:

#### Laminar Flow Workstation with Vibration Isolation System

- tabletop 1HT08-20-20 (800 × 2000 × 200 mm);
- pneumatic vibration isolation system 1VIS22-70-4;
- 1CB-08-20 air filter unit complete with curtains.

#### 1CB-ES

#### 1CB-MM

#### 1CB-PCS

#### 1CB-WL

- Europe-type sockets** (additional)
- Monitor mount with articulated frame** (additional)
- PC holder under the table** (additional)
- Day light (cool white) lamp** (additional)



e-mail: sales@standa.it

www.standa.it



Phone: +370-5-2651474

Fax: +370-5-2651483



**standa**

